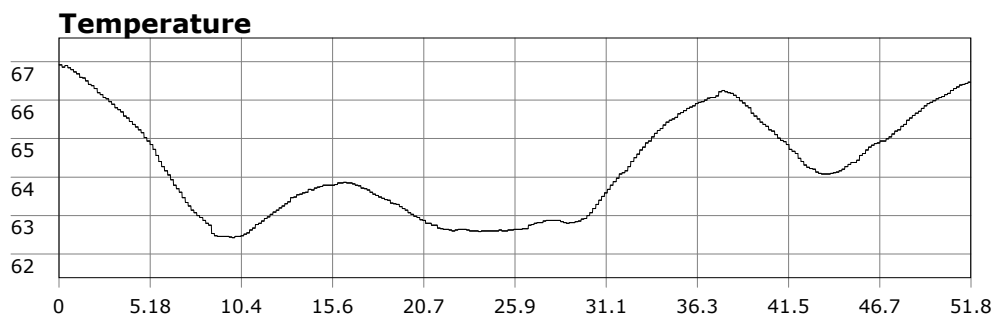


SU-05603 : 8/23/2009 8:56 AM



Interval

10 second(s)

Time

00:51:50 B.T.

00:51:50 B.T.

23:04:50 S.I.

Depth

Avg 23.38 ft 23.38 ft

Max 39.37 ft 39.37 ft

Temperature

Avg 64.24 °F 64.24 °F

Min 62.42 °F 62.42 °F

Ascent Rate

65.99 ft/min (max.)

65.99 ft/min (max.)

Tank Pressure

3250 PSI (in)

1900 PSI (out)

SAC Rate

15.3 PSI/min

Altitude

0 ft

Water Type

Salt Water

Site: 120 Deg reef

Buddy: Several divevetters

Comments

23 Aug 09

Equipment build: 7mm suit + vest w/hood; one light;
131lbs weight; camera with no strobe, spare air

About 8 DiveVetters hit 120 today. Long Point was a bit off limits with a large fishing boat right in our swim path, and no one wanted to be the catch of the day. Surface conditions slightly calmer than yesterday but vis had dropped overnight to 3-5 feet. Dark and creepy for most of the dive until the sun came out, but the water was a balmy 63deg. On the south edge of the reef, vis was very limited. As I was easing down to the sand to hang out for a bit and watch the critters, a sudden cloud of sand caused a temporary whiteout. I thought a fellow diver was joining me at first but soon saw that I had startled a large bat ray (wing span of 5 feet). He was more or less right under me and I never saw him. I almost had to change my wetsuit.

Additional Notes