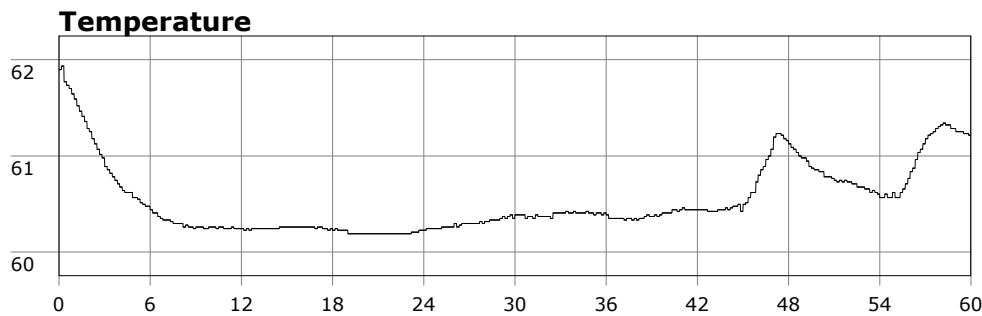
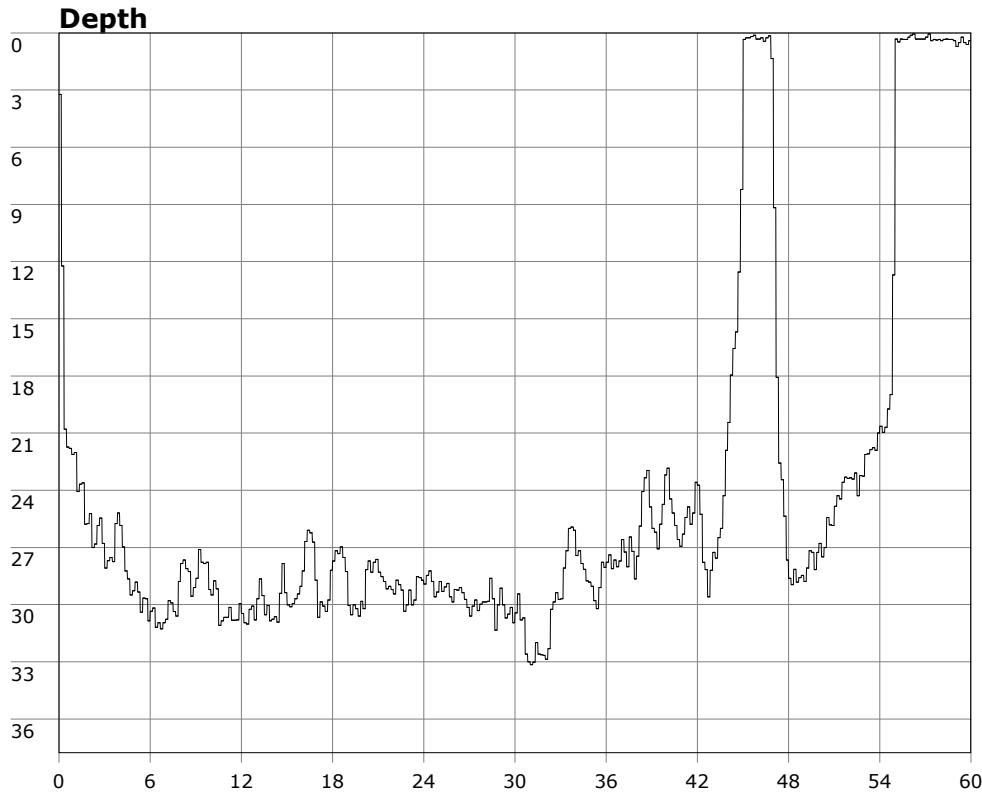


SU-05603 : 8/29/2009 8:20 AM



Interval	10 second(s)
Time	01:00:00 B.T. 01:00:00 B.T. >24 hrs S.I.
Depth	Avg 24.26 ft 24.26 ft Max 33.15 ft 33.15 ft
Temperature	Avg 60.53 °F 60.53 °F Min 60.19 °F 60.19 °F
Ascent Rate	74.34 ft/min (max.) 74.34 ft/min (max.)
Tank Pressure	3250 PSI (in) 1500 PSI (out)
SAC Rate	16.9 PSI/min
Altitude	0 ft
Water Type	Salt Water

Site: 120 deg reef

Buddy: Dr. D.

Comments

29 Aug 09

Equipment build: 7mm suit + vest w/hood; one light; 131lbs weight; camera with strobe, spare air

As was forecast, the sea gods were a bit testy today, complete with a south component to the swell. Making my way around PV I saw quite a few hippie vehicles w/ surfboards which is never a good sign. Conditions at OML were actually a bit calmer than expected, though the surface foam was a good sign bigger waves were in the neighborhood. Sure enough, sets rolled in 3-4 breakers at a time but with plenty of interval in between. Myself and a fellow DiveVetter (Dr. D) suited up and headed out.

In the cove, I could see past my fins from the surface so we knew it'd at least be diveable. Vis at the reef was about 5 feet w/ the south side blown out a bit. In general it was quite

Additional Notes

dark despite the sun being out. It's a good thing I had a light. Surge was generally moderate but especially noticeable when cruising over the bigger structures.

Since I had the shutter bug today, I carried the strobe along hoping to get some happy snaps which I haven't done in a while. Needless to say today was not optimal for photos. Juggling a camera, strobe, and a light in surgy, low vis makes for a challenging photo op. And I had the camera in manual mode so I could play w/ different ISOs, f-stops, etc. This particular camera struggles to auto focus in low light conditions when shooting macro. So I often had to focus manually. A few turned out, but not many.