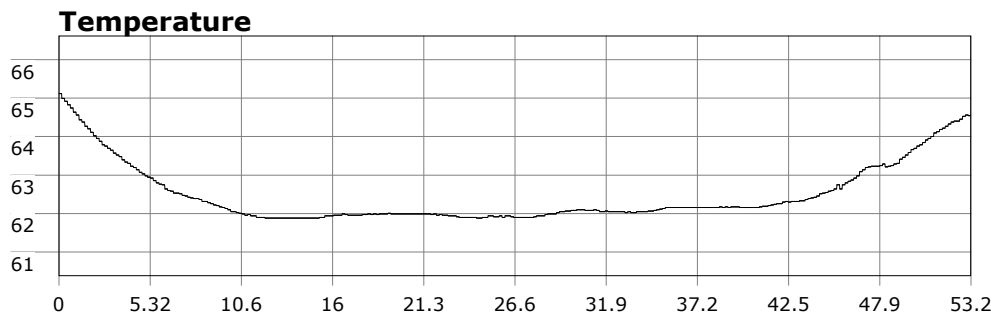
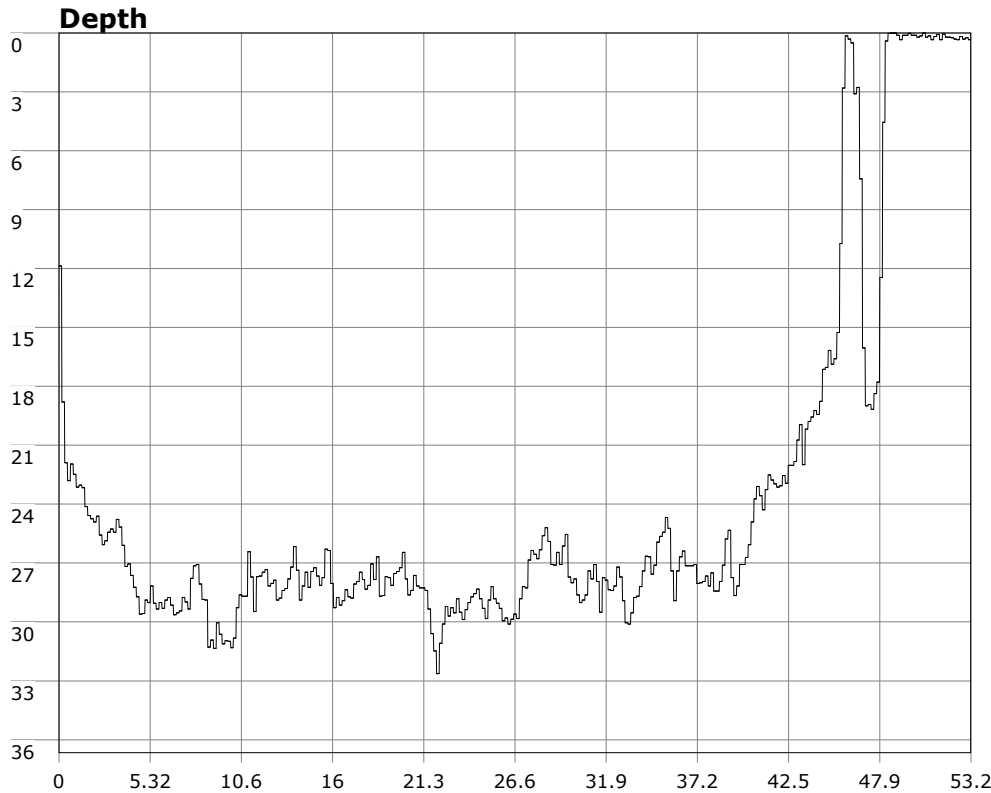


# SU-05603 : 8/30/2009 8:53 AM



<b>Interval</b>	10 second(s)
<b>Time</b>	00:53:10 B.T. 00:53:10 B.T. 23:33:20 S.I.
<b>Depth</b>	Avg 23.61 ft 23.61 ft Max 32.64 ft 32.64 ft
<b>Temperature</b>	Avg 62.49 °F 62.49 °F Min 61.88 °F 61.88 °F
<b>Ascent Rate</b>	47.55 ft/min (max.) 47.55 ft/min (max.)
<b>Tank Pressure</b>	3400 PSI (in) 1900 PSI (out)
<b>SAC Rate</b>	16.6 PSI/min
<b>Altitude</b>	0 ft
<b>Water Type</b>	Salt Water

**Site:** 120 Deg reef

**Buddy:**

## Comments

30 Aug 09

Equipment build: 7mm suit + vest w/hood; one light;  
131lbs weight; camera with no strobe, spare air

Back to 120 again today. Only two other DiveVetters saw fit to come for the weekly gathering. They went to the Point while I hooked a left for 120 reef. The swell size was a bit less than yesterday but the waves were more constant. The surface foam, confined to the cove yesterday, now ran all the way to the Point. So it was no surprise vis had dropped to 3-4 feet. The sun was out early and gave the water an ominous, green glow when looking into the distance.

Since covering large swaths of reef was not feasible

## Additional Notes

---

---

---

---

---

---

---

---

---

---

with the vis, I found two large pieces of structure, ducked into some kelp, and just hung out to critter watch. A medium sized male sheephead was patrolling the area, so I adopted him as my buddy for the day. Several greenlings, garibaldi, female sheephead, and kelp bass also kept me company. I kept pointing out the female sheephead to the male, but he didn't seem interested.