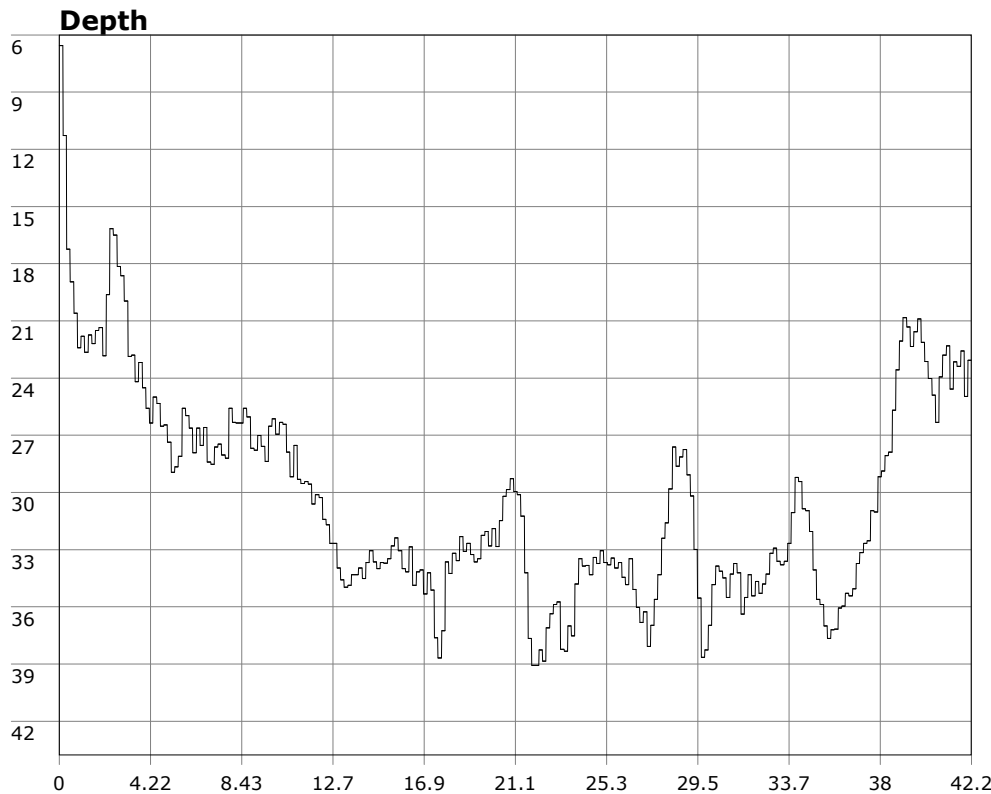


SU-05603 : 2/5/2012 9:15 AM



Interval

10 second(s)

Time

00:42:10 B.T.

00:42:10 B.T.

23:05:50 S.I.

Depth

Avg 30.35 ft 30.35 ft

Max 39.07 ft 39.07 ft

Temperature

Avg 57.66 °F 57.66 °F

Min 57.56 °F 57.56 °F

Ascent Rate

21.74 ft/min (max.)

21.74 ft/min (max.)

Tank Pressure

2800 PSI (in)

1500 PSI (out)

SAC Rate

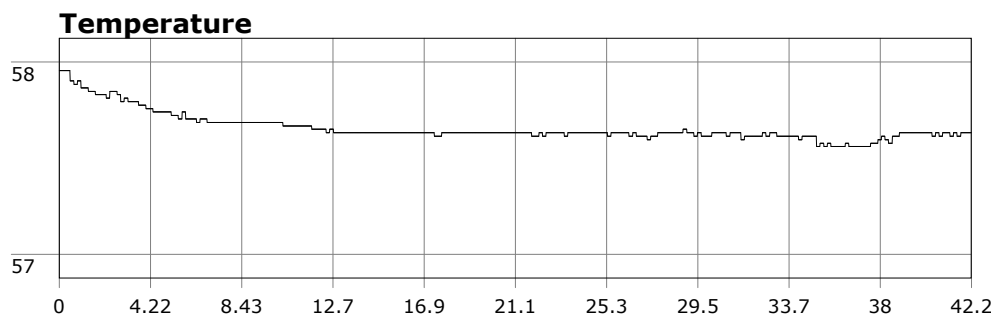
16.1 PSI/min

Altitude

0 ft

Water Type

Salt Water



Site: 120 Deg reef

Buddy: PSD

Comments

Equipment build: new 7mm suit + 7 mm vest w/hood; three lights; 18 lbs weight, camera

Me and PSD had hiked to the point but didn't like we saw. While others did do the point, we called it and got in at the cove. Other dive veters hit the cove as well, with one taking a hard fall on entry. Luckily he wasn't hurt and we found the fin he dropped.

We headed slowly east once on the reef, hitting the sand a little north of the SE corner. Highlights included a sheep crap and a reef shrimp.

Additional Notes
