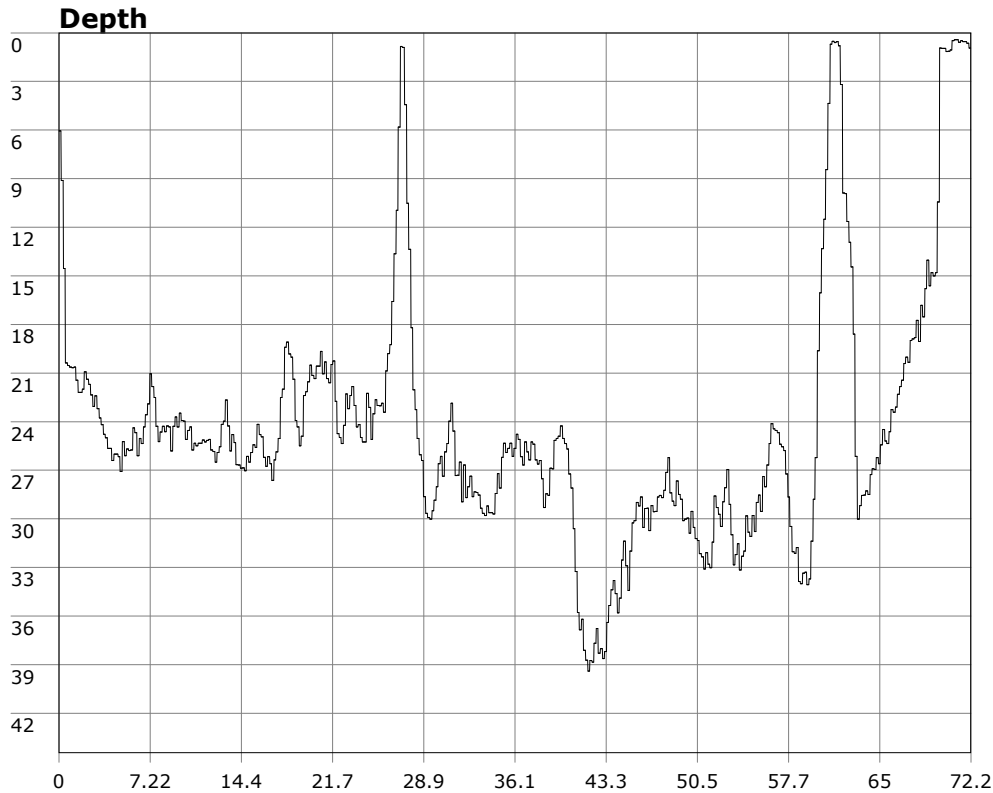


# SU-05603 : 6/13/2009 8:29 AM



## Interval

10 second(s)

## Time

01:12:10 B.T.

01:12:10 B.T.

>24 hrs S.I.

## Depth

Avg 24.32 ft 24.32 ft

Max 39.40 ft 39.40 ft

## Temperature

Avg 59.06 °F 59.06 °F

Min 58.37 °F 58.37 °F

## Ascent Rate

57.06 ft/min (max.)

57.06 ft/min (max.)

## Tank Pressure

3500 PSI (in)

1750 PSI (out)

## SAC Rate

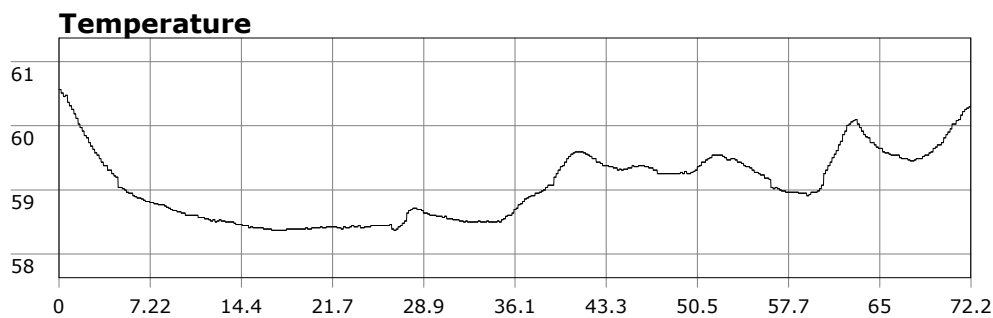
14 PSI/min

## Altitude

0 ft

## Water Type

Salt Water



**Site:** 120 deg reef

**Buddy:**

## Comments

13 Jun 09

Equipment build: 7mm suit + vest w/hood; one light;  
131lbs weight; camera no strobe, spare air

Very murky dive at 120 reef today. Was flat but looked green from the ridge. But since the resort is open and there isn't the gymnastics with the guards, I had to get in. Vis was about 3 feet with slight surge, and the water was very green. I really had trouble navigating and knowing where on the reef I was. Still a good dive due to the tremendous amount of life here. Exit was without incident and air usage was very good.

## Additional Notes