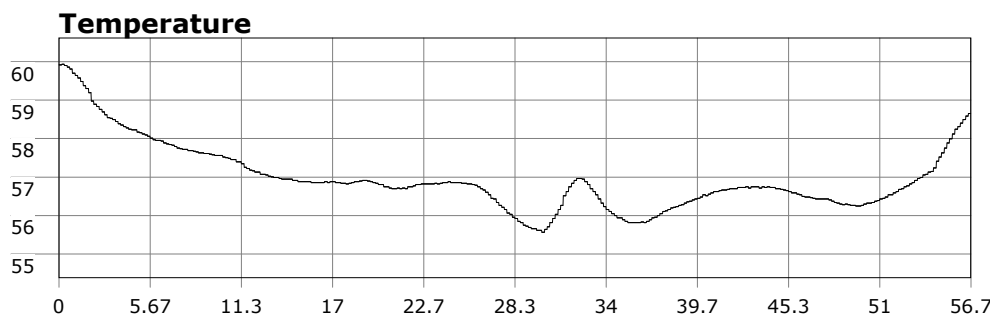
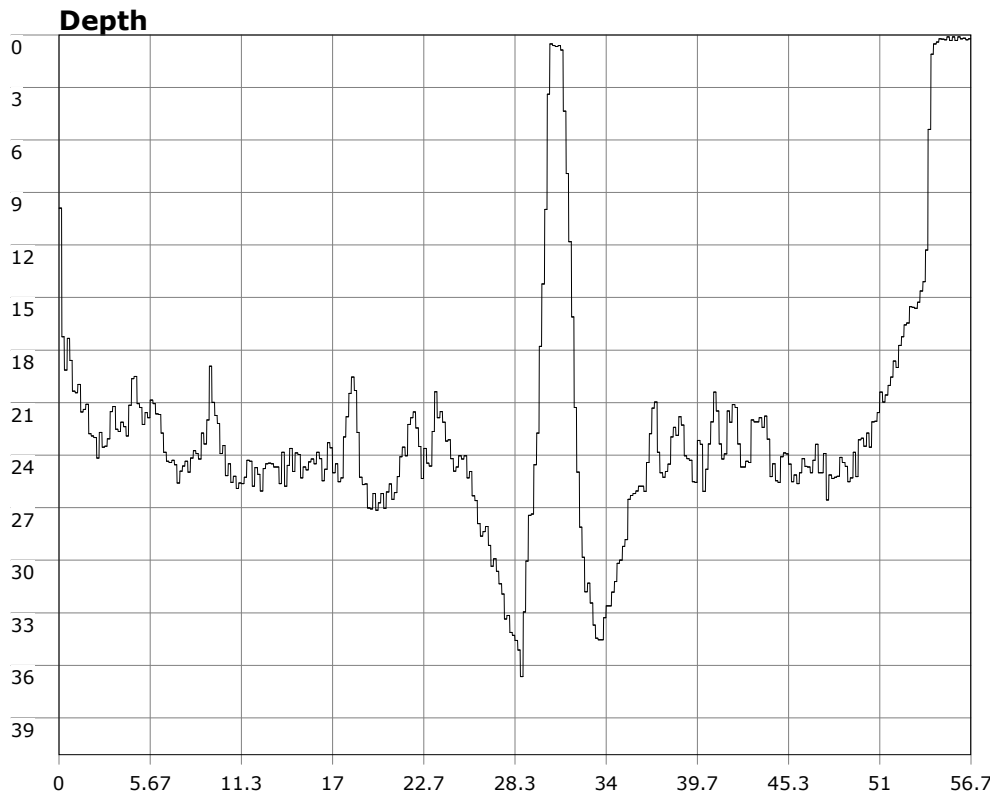


# SU-05603 : 6/14/2009 8:57 AM



## Interval

10 second(s)

## Time

00:56:40 B.T.

00:56:40 B.T.

23:15:50 S.I.

## Depth

Avg 22.48 ft 22.48 ft

Max 36.65 ft 36.65 ft

## Temperature

Avg 56.96 °F 56.96 °F

Min 55.56 °F 55.56 °F

## Ascent Rate

41.34 ft/min (max.)

41.34 ft/min (max.)

## Tank Pressure

3500 PSI (in)

1900 PSI (out)

## SAC Rate

16.9 PSI/min

## Altitude

0 ft

## Water Type

Salt Water

**Site:** 120 deg reef

**Buddy:**

## Comments

14 Jun 09

Equipment build: 7mm suit + vest w/hood; one light;  
131lbs weight; camera with no strobe, spare air

The occasional breaker at the cove made entry/exit a timed affair. Most of the Vets crew went to the point, but I just can't resist 120 reef. More surge on the bottom today but the water wasn't as green. Vis was 4ft. This time I did much better navigating the reef and made a good scrub of the area. Lots of wildlife both in terms of fish and critters on the reef. Simply a very good dive. Post dive debrief was very good and we weren't harassed by the locals as we expected at this high-dollar resort.

## Additional Notes