

SU-05603 : 1/28/2012 8:36 AM



Interval

10 second(s)

Time

01:05:20 B.T.

01:05:20 B.T.

>24 hrs S.I.

Depth

Avg 25.86 ft 25.86 ft

Max 41.21 ft 41.21 ft

Temperature

Avg 56.70 °F 56.70 °F

Min 56.55 °F 56.55 °F

Ascent Rate

37.85 ft/min (max.)

37.85 ft/min (max.)

Tank Pressure

3250 PSI (in)

1250 PSI (out)

SAC Rate

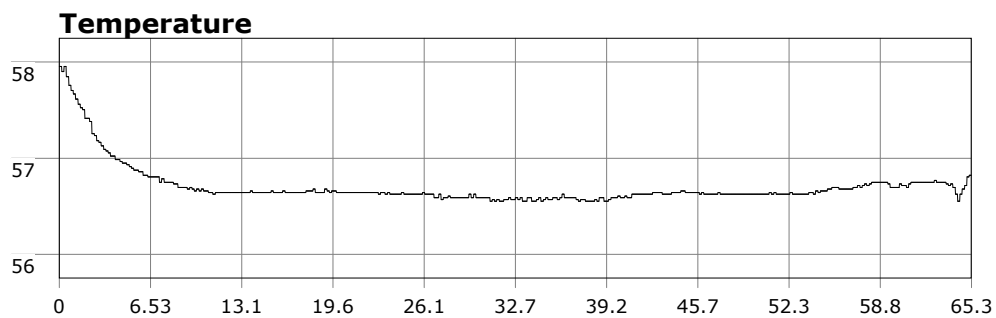
17.4 PSI/min

Altitude

0 ft

Water Type

Salt Water



Site: 120 Deg reef

Buddy:

Comments

Equipment build: new 7mm suit + 7 mm vest w/hood; three lights; 18 lbs weight, camera

Low vis dive today. Surf/swell was within limits though the surface was a bit choppy from the wind. At the drop point, I could just see past my fins so I figured vis would be limit. And it was at 3-5ft. Still, I saw a plethora of fish, gobis, nudibranchs, even san diego dorids and a sheep crab. Even saw a one legged starfish. Upon surfacing, conditions were a bit bumpier and exiting was a little more tricky than entry.

Additional Notes
