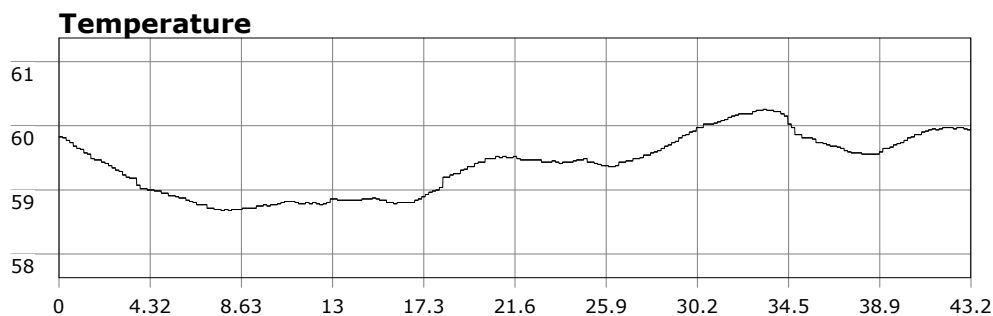
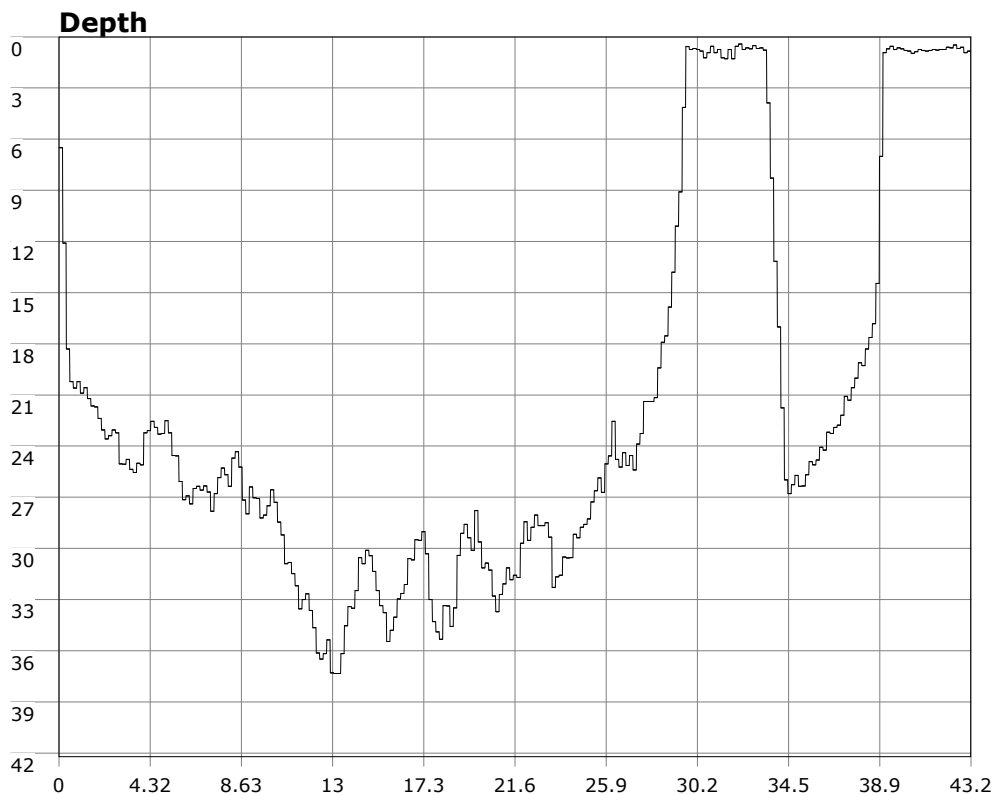


# SU-05603 : 10/31/2010 8:47 AM



<b>Interval</b>	10 second(s)
<b>Time</b>	00:43:10 B.T. 00:43:10 B.T. 22:27:49 S.I.
<b>Depth</b>	Avg 21.67 ft 21.67 ft Max 37.33 ft 37.33 ft
<b>Temperature</b>	Avg 59.39 °F 59.39 °F Min 58.68 °F 58.68 °F
<b>Ascent Rate</b>	44.64 ft/min (max.) 44.64 ft/min (max.)
<b>Tank Pressure</b>	2500 PSI (in) 1500 PSI (out)
<b>SAC Rate</b>	14.2 PSI/min
<b>Altitude</b>	0 ft
<b>Water Type</b>	Salt Water

**Site:** 120 Deg reef

**Buddy:** Dr. D

## Comments

Equipment build: 7mm suit + vest w/hood; one light; camera no strobe, 19 lbs weight

Despite the calm water, only a few of us showed up today. The water was flat with only the occasional moderate wave. We hit the reef and skirted the south edge until we came to the southeast corner. We circled there a bit and headed back in. Vis was only so so and the water was dark due to the overcast conditons. But we stayed together for the most part. The kelp was leaning heavily towards the south (off shore) which I've never seen before. A good but dark and creepy dive--perfect for halloween.

## Additional Notes

---

---

---

---

---

---

---

---

---

---