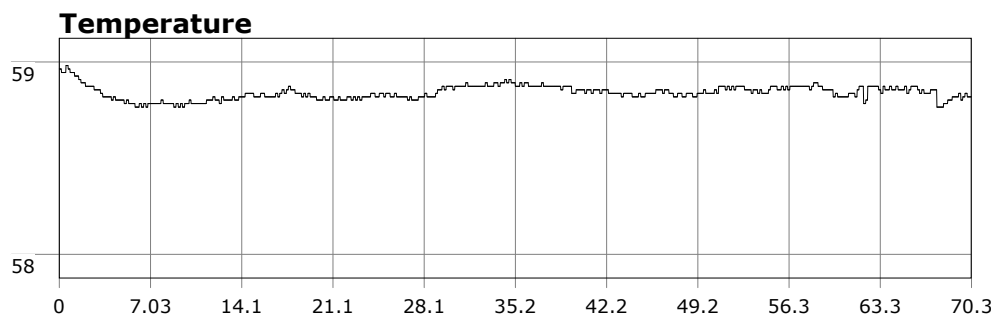


SU-05603 : 12/3/2011 8:29 AM



Interval

10 second(s)

Time

01:10:20 B.T.

01:10:20 B.T.

>24 hrs S.I.

Depth

Avg 23.21 ft 23.21 ft

Max 34.55 ft 34.55 ft

Temperature

Avg 58.84 °F 58.84 °F

Min 58.77 °F 58.77 °F

Ascent Rate

43.28 ft/min (max.)

43.28 ft/min (max.)

Tank Pressure

2900 PSI (in)

1100 PSI (out)

SAC Rate

15.1 PSI/min

Altitude

0 ft

Water Type

Salt Water

Site: 120 deg reef

Buddy:

Comments

Equipment build: new 7mm suit + 7 mm vest w/hood; three lights; 18 lbs weight, camera

Really great dive at 120 reef today. I expected crappy conditions both due to the windstorm this week and the forecasted winds today, but vis ran a solid 15ft with the surface clearly visible from 30ft. Water temp was 59. Entry was straightforward but with a bumpy surface swim to the drop zone. Near the drop zone I could just see the top of the rocks which was a good sign.

I hooked left and went farther north than I think I've ever been, just to explore a new area. Normally this area is surgy and blown out. I hung out there most of the dive and just lazily putzed around. I eventually came across a ridgeline that ran south and followed it until it dumped me out in the sand.

For the exit, surface conditions in the cove had become a bit rougher (though not the VAS conditions from a few weeks ago). Waves were breaking quickly every 4 seconds, and occasionally there would be a set of 2-3 bigger waves to avoid. These were hard to pick out since so many waves were rolling in, and I aborted my first exit attempt at the last second because of this.

Several groups of divers were suiting up when I got back to the car, and in listening, none had scoped out the conditions. Let's see...on a day with a wind advisory, you're suiting up at OML without checking conditions. One of them was one of those ditzzy chicks that says "like" every other word and ends each statement as if asking a question. Maybe someone was filming a 90210 episode.

Additional Notes
