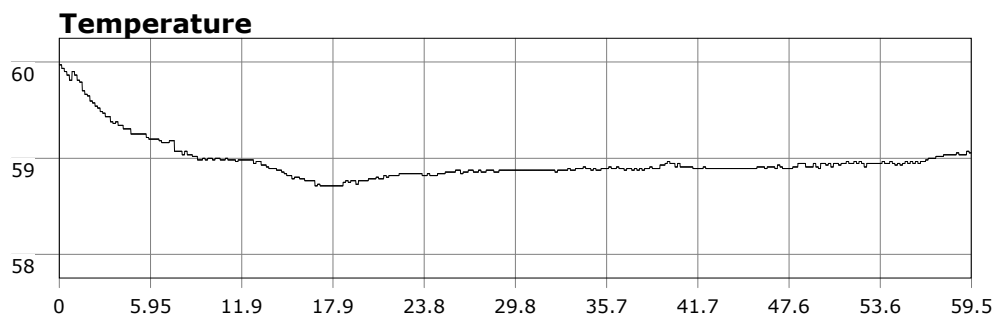


SU-05603 : 12/4/2011 9:09 AM



Interval

10 second(s)

Time

00:59:30 B.T.

00:59:30 B.T.

23:29:44 S.I.

Depth

Avg 21.32 ft 21.32 ft

Max 37.81 ft 37.81 ft

Temperature

Avg 58.97 °F 58.97 °F

Min 58.71 °F 58.71 °F

Ascent Rate

43.28 ft/min (max.)

43.28 ft/min (max.)

Tank Pressure

2900 PSI (in)

1500 PSI (out)

SAC Rate

14.4 PSI/min

Altitude

0 ft

Water Type

Salt Water

Site: 120 Reef

Buddy: Dr. D.

Comments

Equipment build: new 7mm suit + 7 mm vest w/hood; three lights; 18 lbs weight, camera

Hit mostly the same area as yesterday. Once at the reef, hooked north and really explored that area extensively. Vis a little less at 10-12 ft but still good. Tons of urchins and saw a good sized leopard shark and a short bug.

Additional Notes
