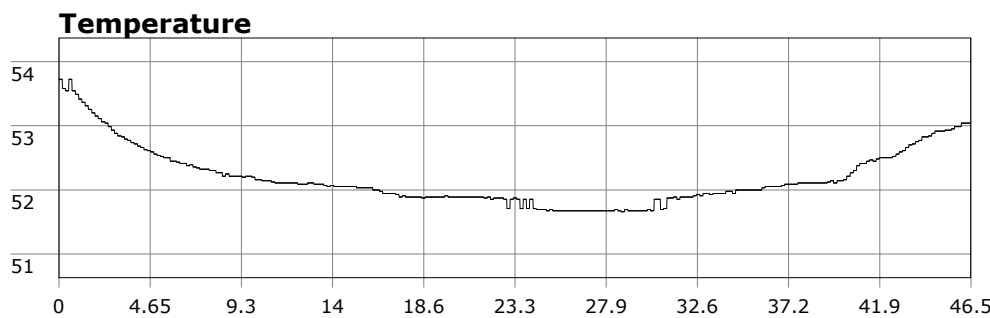
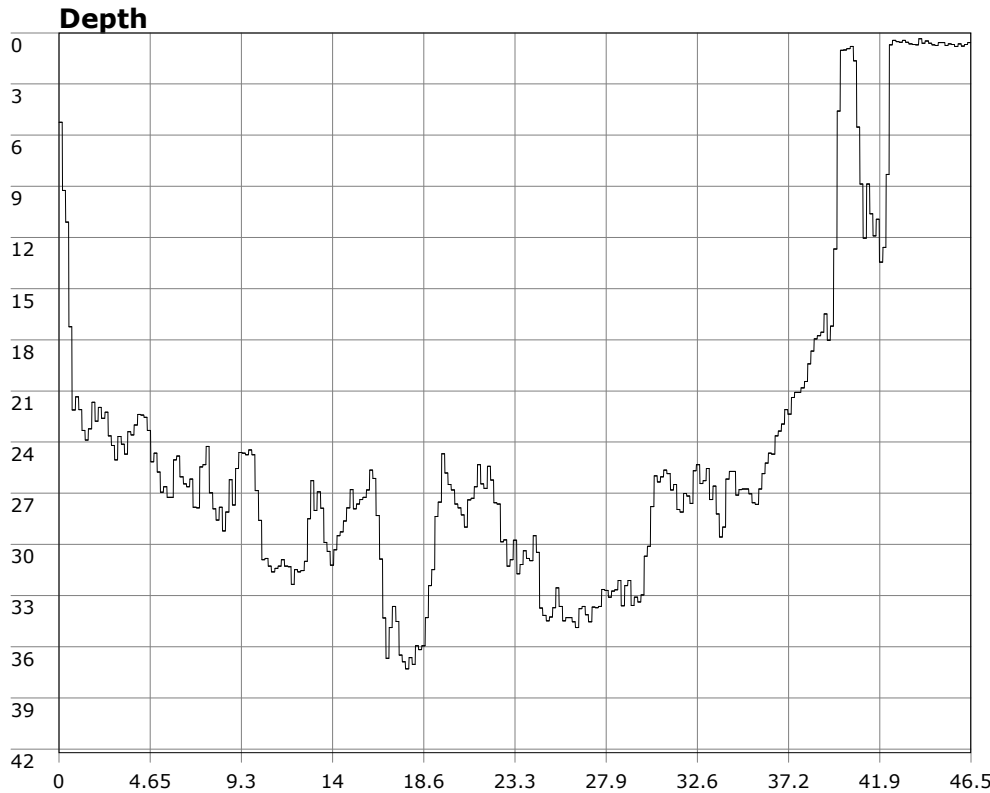


SU-05603 : 4/9/2011 8:48 AM



Interval	10 second(s)
Time	00:46:30 B.T. 00:46:30 B.T. >24 hrs S.I.
Depth	Avg 24.02 ft 24.02 ft Max 37.30 ft 37.30 ft
Temperature	Avg 52.19 °F 52.19 °F Min 51.66 °F 51.66 °F
Ascent Rate	48.52 ft/min (max.) 48.52 ft/min (max.)
Tank Pressure	3200 PSI (in) 1750 PSI (out)
SAC Rate	18.1 PSI/min
Altitude	0 ft
Water Type	Salt Water

Site: 120 deg reef

Buddy:

Comments

Equipment build: 7mm suit + vest w/hood; one light; 19 lbs weight, camera

Much to my surprise entry at OML was doable today. With the swell earlier this week and the forecasted mixed swell and rain, I had expected a no-go. But the sun was out and the water fairly flat.

Entry/exit required timing around the occasional moderate-to-big waves, but these didn't come in large sets, and there was a reasonable break in between. I got in right around low tide, just behind a group of four other divers (who were manning up for a second dive when I was leaving).

Not surprising was the low vis (~5ft) and manhood shrinking 52deg water. Vis outside the reef at the descent point was essentially zero, and I could only just see past my fins when looking down from the surface. Surge on the bottom was moderate but manageable.

Despite the vis, the strawberry anemones and lemon dorids were still colorful as were the numerous tiny spanish shawls getting blasted by the surge. Of particular note I saw two

Additional Notes

san diego dorids on the SE side of the reef.