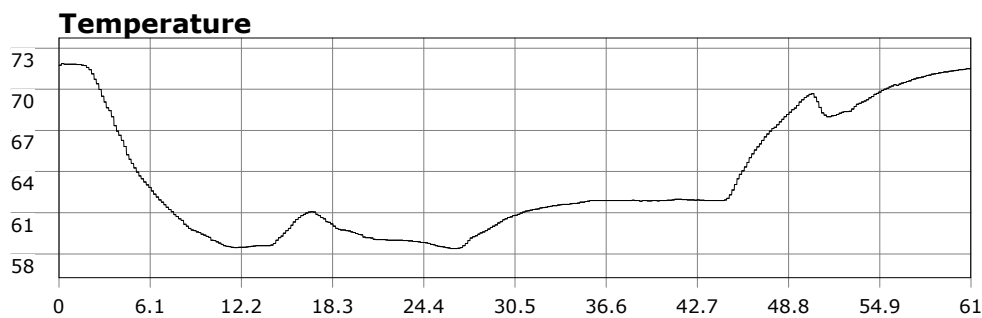
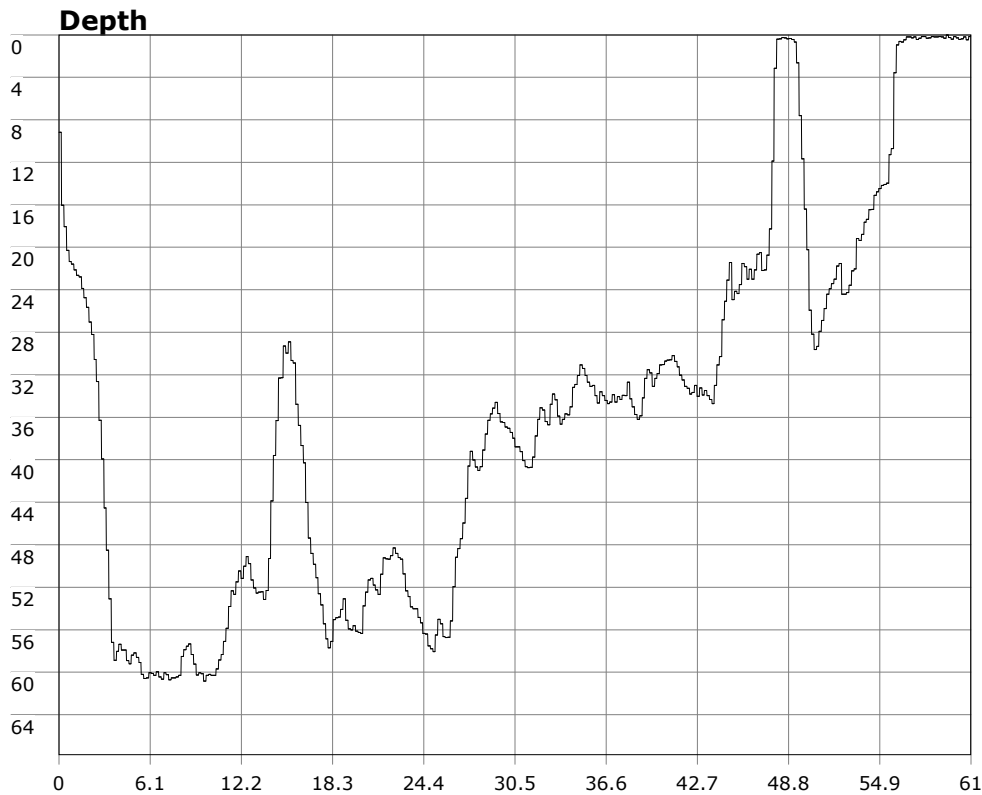


SU-05603 : 9/13/2009 8:58 AM



Interval	10 second(s)
Time	01:01:00 B.T. 01:01:00 B.T. >24 hrs S.I.
Depth	Avg 35.46 ft 35.46 ft Max 60.85 ft 60.85 ft
Temperature	Avg 63.40 °F 63.40 °F Min 58.39 °F 58.39 °F
Ascent Rate	52.41 ft/min (max.) 52.41 ft/min (max.)
Tank Pressure	3100 PSI (in) 1000 PSI (out)
SAC Rate	16.7 PSI/min
Altitude	0 ft
Water Type	Salt Water

Site: Vet's Park

Buddy:

Comments

13Sep 09

Equipment build: 7mm suit + vest w/hood; one light;
131lbs weight; camera with no strobe, spare air

OML and Malaga were mud all weekend so out of desperation I went to Vet's park today to dive that sandy underwater landfill. Dropped down to 60ft, cruised south for 30 min, then eased up the bottom to 30 feet and cruised back. Some surf w/hard breakers but doable. Saw two crabs making whoopee, horn sharks, flatties, and some sheep crab. First dive with the transplate harness and Air2. Much easier to get into/out of. Integrated weights very nice. So long weight belt.

Additional Notes