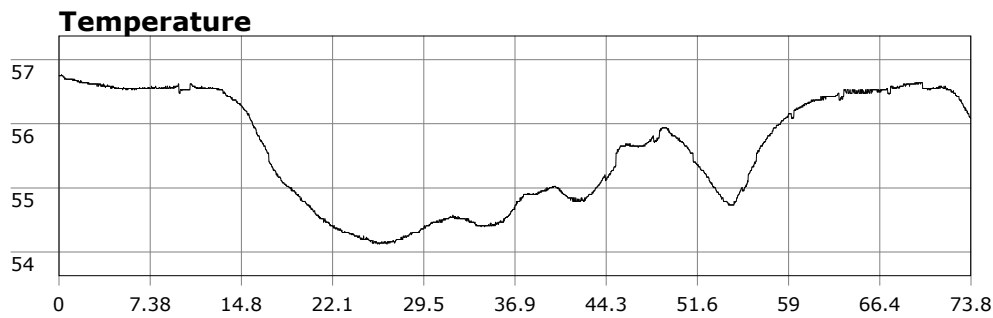


SU-05603 : 3/14/2009 9:19 AM



Interval	1 second(s)
Time	01:13:45 B.T. 01:13:45 B.T. 01:57:19 S.I.
Depth	Avg 17.60 ft 17.60 ft Max 32.80 ft 32.80 ft
Temperature	Avg 55.58 °F 55.58 °F Min 54.12 °F 54.12 °F
Ascent Rate	93.17 ft/min (max.) 93.17 ft/min (max.)
Tank Pressure	3000 PSI (in) 500 PSI (out)
SAC Rate	22.4 PSI/min
Altitude	0 ft
Water Type	Salt Water

Site: Christmas Tree Cove

Buddy:

Comments

14 Mar 09

Equipment build: 7mm suit + vest w/hood; one light; 131lbs weight; camera with no strobe, spare air

Ok dive today. Low tide and swell required crossing the boulder field for entry/exit. The kick out was a bit of a roller coaster. Once I dropped down, vis was a bit limited but opened up to 10ft as I kicked out. Headed out on a 240deg or so heading and made my way out of the cove and just starting around the corner towards Honeymoon cove. Saw the occasional fish (garibaldi, sheephead, gobi, etc), Did briefly see one large male sheephead and a seal. Also saw several bugs including one that was quite brave. Overall a good dive.

Additional Notes
