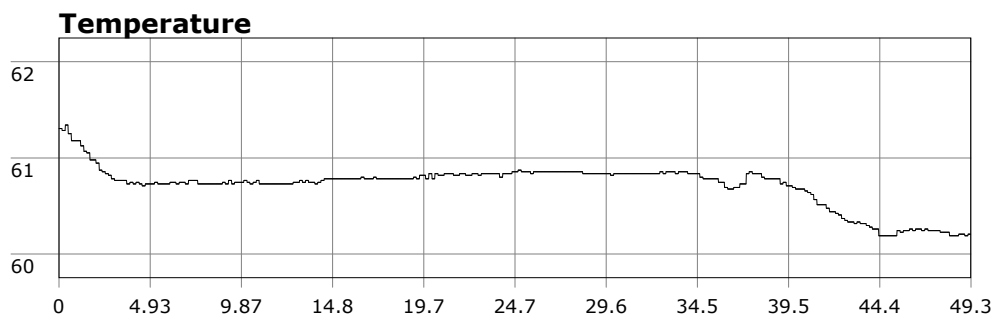


SU-05603 : 11/14/2009 9:12 AM



Interval	10 second(s)
Time	00:49:20 B.T. 00:49:20 B.T. >24 hrs S.I.
Depth	Avg 24.12 ft 24.12 ft Max 39.33 ft 39.33 ft
Temperature	Avg 60.72 °F 60.72 °F Min 60.19 °F 60.19 °F
Ascent Rate	35.52 ft/min (max.) 35.52 ft/min (max.)
Tank Pressure	3000 PSI (in) 1500 PSI (out)
SAC Rate	17.6 PSI/min
Altitude	0 ft
Water Type	Salt Water

Site: 120 deg reef

Buddy: Dr D, The Rev

Comments

14Nov 09

Equipment build: 7mm suit + vest w/hood; one light;
141lbs weight; camera no strobe, knife

Despite the heavy winds in the forecast the last few days, conditions at OML looked very diveable. The point was out due to the waves coming in but the cove was fine. We kicked out and dropped down. Having the camera, I was dive lead and I did a better job this time of staying on the southern side. Saw some brittle stars, an octo, and one legal bug. Also saw a gutiar shark. The Rev saw a bat ray but I missed it. Vis in the 10-15ft range w/ little swell made for a great dive. I decided to christen my backup wet suit that I've had for years. What a difference a new suit makes. I was far warmer than in my old, battle worn suit.

Additional Notes
