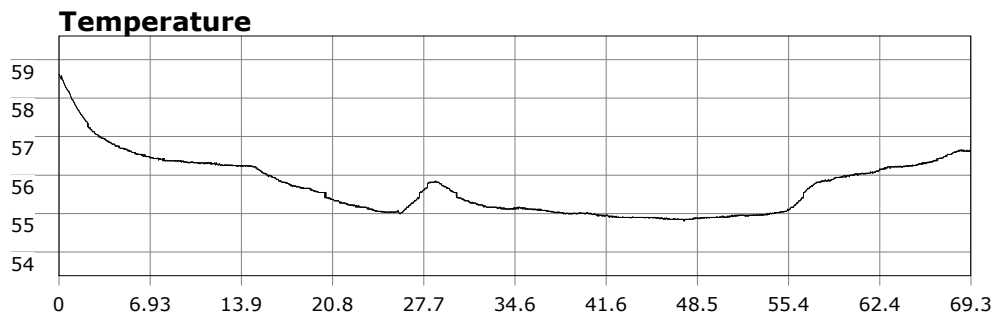


# SU-05603 : 3/15/2009 9:41 AM



## Interval

1 second(s)

## Time

01:09:17 B.T.

01:09:17 B.T.

23:07:49 S.I.

## Depth

Avg 20.87 ft 20.87 ft

Max 42.96 ft 42.96 ft

## Temperature

Avg 55.69 °F 55.69 °F

Min 54.81 °F 54.81 °F

## Ascent Rate

58.23 ft/min (max.)

58.23 ft/min (max.)

## Tank Pressure

3150 PSI (in)

1000 PSI (out)

## SAC Rate

19.3 PSI/min

## Altitude

0 ft

## Water Type

Salt Water

**Site:** OML

**Buddy:**

## Comments

15 Mar 09

Equipment build: 7mm suit + vest w/hood; one light; 131lbs weight; camera with no strobe, spare air

Entered in at the cove despite the muddy conditions. Everyone else entered at the point. The kick towards the point was dark and creepy with vis around 4 ft. Very much like diving at the boathouse. Once I got nearer the point the vis opened up to 10 feet. The rocks here are cool with gorgonians, strawberry anemones, all kinds of fish. Also saw a few bugs. After making it most of the way to the point, I flipped around and headed in. Exit required timing of the swells but not too bad. Overall a good dive.

## Additional Notes

---

---

---

---

---

---

---

---

---

---