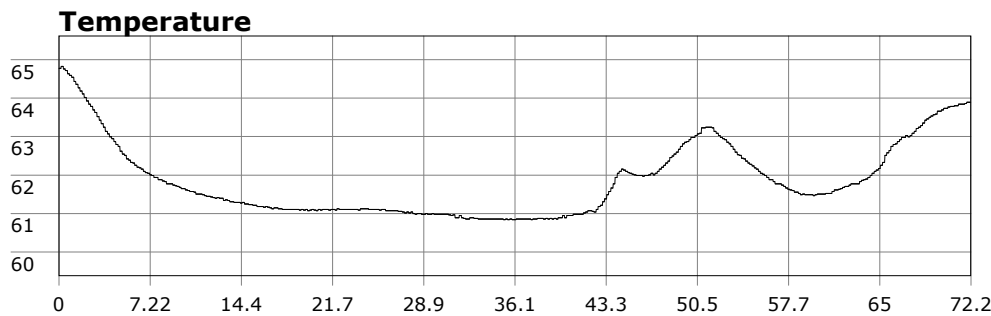
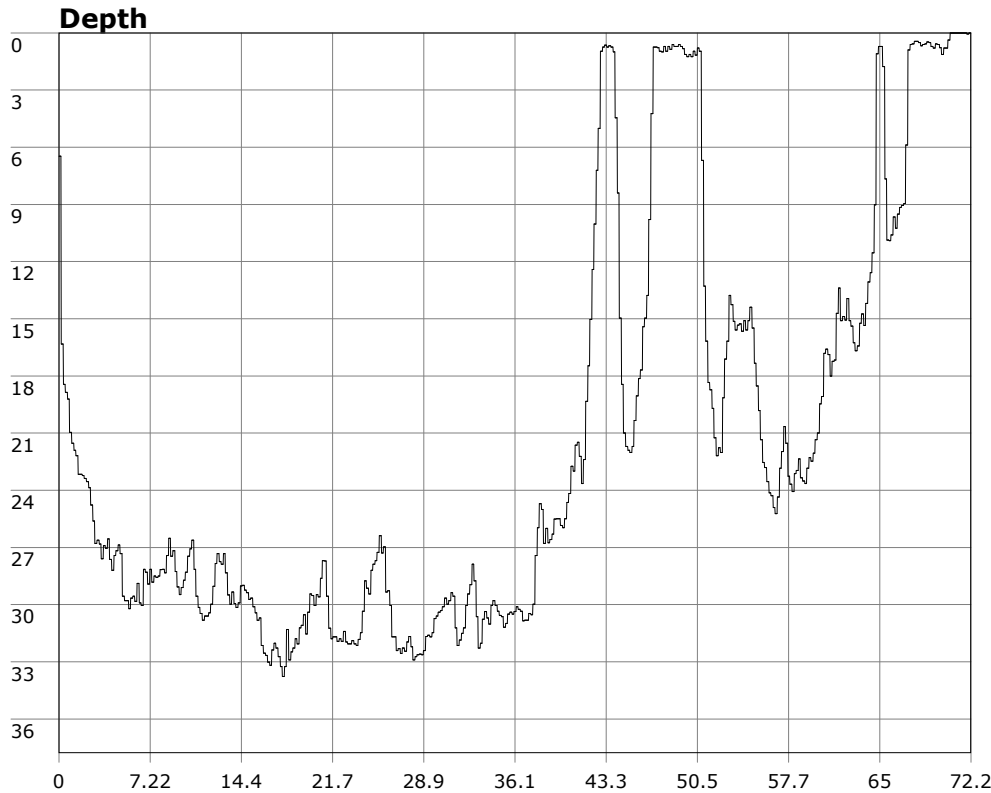


# SU-05603 : 8/16/2009 8:54 AM



<b>Interval</b>	10 second(s)
<b>Time</b>	01:12:10 B.T. 01:12:10 B.T. 22:29:20 S.I.
<b>Depth</b>	Avg 21.43 ft 21.43 ft Max 33.77 ft 33.77 ft
<b>Temperature</b>	Avg 61.87 °F 61.87 °F Min 60.84 °F 60.84 °F
<b>Ascent Rate</b>	47.55 ft/min (max.) 47.55 ft/min (max.)
<b>Tank Pressure</b>	3250 PSI (in) 1500 PSI (out)
<b>SAC Rate</b>	14.8 PSI/min
<b>Altitude</b>	0 ft
<b>Water Type</b>	Salt Water

**Site:** 120 deg reef

**Buddy:**

## Comments

16 Aug 09

Equipment build: 7mm suit + vest w/hood; one light; 131lbs weight; camera with no strobe, spare air

For today's dive I opted to do the easy do at 120 Deg reef. Wasn't up for that bout with the current this time. Lots of DiveVetters in the water with even TwinDuct and PsychoVetters making a token appearance. The water was calmer than yesterday making entry at the point a doable do. In fact, I was the only one not to get in at the point. Before we split up, I briefed everyone on the swift current I encountered yesterday at 35-40ft depth and that they really needed to factor that into their air consumption for the return kick to the cove. Sure enough, Point divers reported a hard kick back to the exit point.

As I dropped down in the cove, I found the current to be still in full swing and it was a bit of an effort to get to the reef. Once there I found vis to be in the 8-10ft range and a bit dark as the sun hasn't been coming out until 1100 in recent weeks. Surge was present but not bad, and the structure broke up the current enough that getting around was easy enough.

## Additional Notes

---

---

---

---

---

---

---

---

---

---

Overall a very enjoyable 1hr dive. The sunstars that have been MIA for a while appear to be back, and the tube anemones have been eating well as I saw much bigger ones than usual. I also saw in the distance a large male sheephead. He must have seen my reports about the sheephead NOW convention that's been going on forever at this reef.

We fired up the grill in the parking lot and debriefed until about 1300. So far the resort management hasn't given us grief on our debriefing activities.