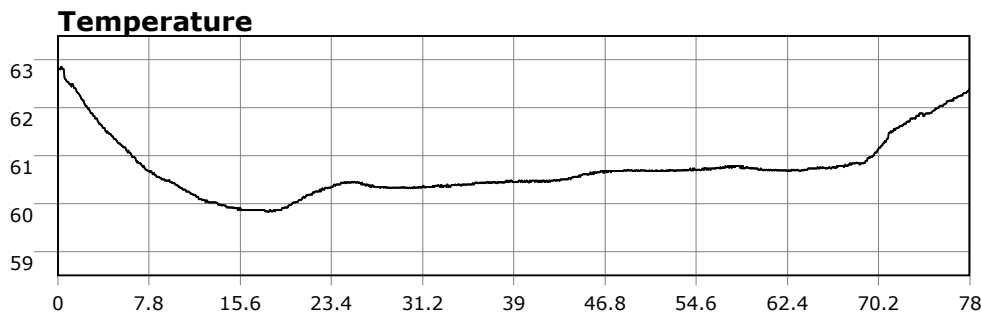
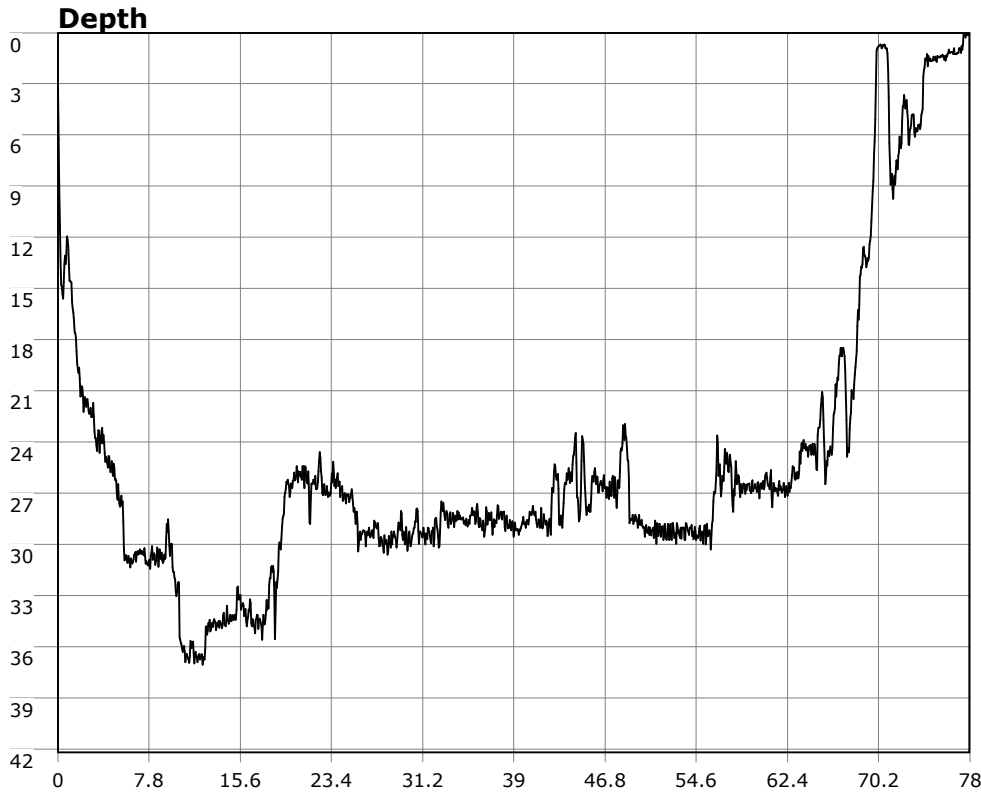


SU-05603 : 10/18/2008 9:28 AM



Interval

1 second(s)

Time

01:18:02 B.T.

01:18:02 B.T.

>24 hrs S.I.

Depth

Avg 25.07 ft 25.07 ft

Max 37.13 ft 37.13 ft

Temperature

Avg 60.72 °F 60.72 °F

Min 59.83 °F 59.83 °F

Ascent Rate

50.47 ft/min (max.)

50.47 ft/min (max.)

Tank Pressure

3200 PSI (in)

900 PSI (out)

SAC Rate

16.8 PSI/min

Altitude

0 ft

Water Type

Salt Water

Site: Christmas Tree Cove

Buddy:

Comments

18 Oct 08

Equipment build: 7mm suit + vest w/hood; one light; 13lbs weight; camera no strobe.

Another great dive at Christmas Tree Cove. Swell and wind had been down and as expected vis was really good and consistently 20 feet. I hit the rock piles about 2/3rds of the way out (as before) but also kicked out beyond the mouth of the cove. The kelp there was a bit odd as it was rooted in the sand and there was not much structure. So I came in a bit and used a rock to bust up urchins to feed the fish. This was really cool and I spent most of the dive doing it. Swarms of senioritas, kelp bass, sheephead and some garibaldi just went nuts. I later peeked into a few holes, one of which had 3 bugs (one big one). Simply put just a great dive.

Additional Notes