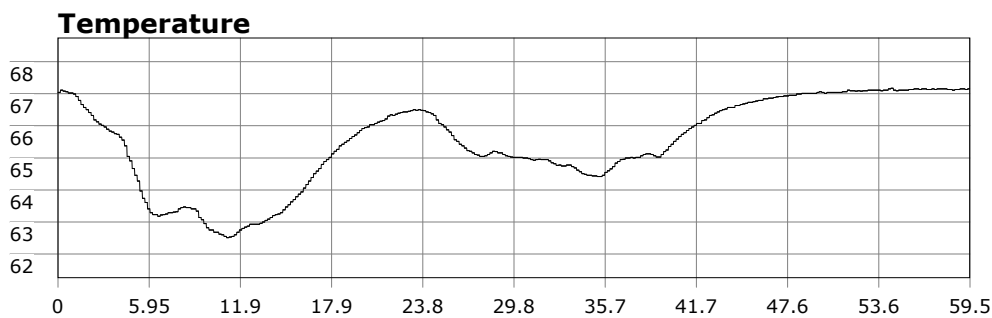
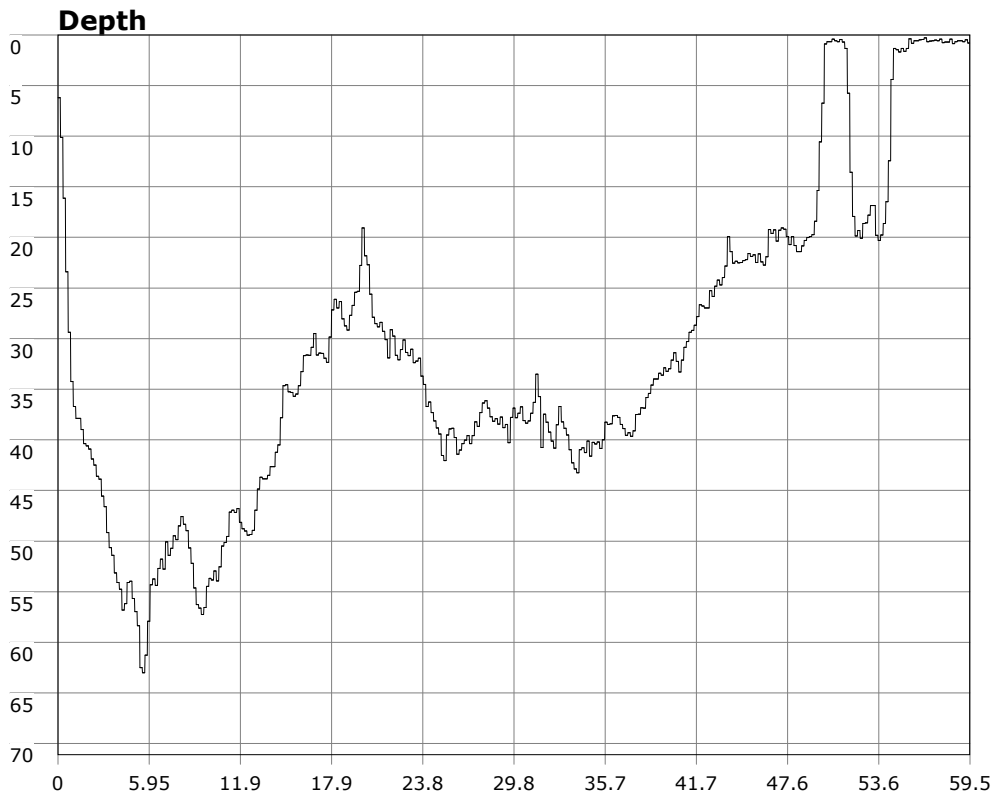


# SU-05603 : 10/18/2009 9:14 AM



## Interval

10 second(s)

## Time

00:59:30 B.T.

00:59:30 B.T.

>24 hrs S.I.

## Depth

Avg 31.51 ft 31.51 ft

Max 63.01 ft 63.01 ft

## Temperature

Avg 65.48 °F 65.48 °F

Min 62.51 °F 62.51 °F

## Ascent Rate

48.33 ft/min (max.)

48.33 ft/min (max.)

## Tank Pressure

3150 PSI (in)

1300 PSI (out)

## SAC Rate

16 PSI/min

## Altitude

0 ft

## Water Type

Salt Water

**Site:** Long Point

**Buddy:** Rev Al and Richard the Brit

## Comments

18 Oct 09  
Equipment build: 7mm suit + vest w/hood; one lights;  
131lbs weight; camera no strobe, knife

Conditions looked iffy today. Muddy in the cove at OML and the water was choppy w/ some foam. The point looked better though the waves made this an advanced entry. 5 of us decided on the point w/ two going to 120 reef. All made the point entry intact and we surface kicked out and dropped down. Vis was far better than expected given recent wx (15ft at the point). As always The Rev put us right on the point and the statue. We hung out there for a bit then made a slow kick back to the cove. All the usual fish and invertebrate wildlife were out to include an small group of female sheephead and senoritas that followed us a ways down the coast. Perhaps they thought we were good protection. Some short bugs were spotted but no legals. A good debriefed followed.

## Additional Notes