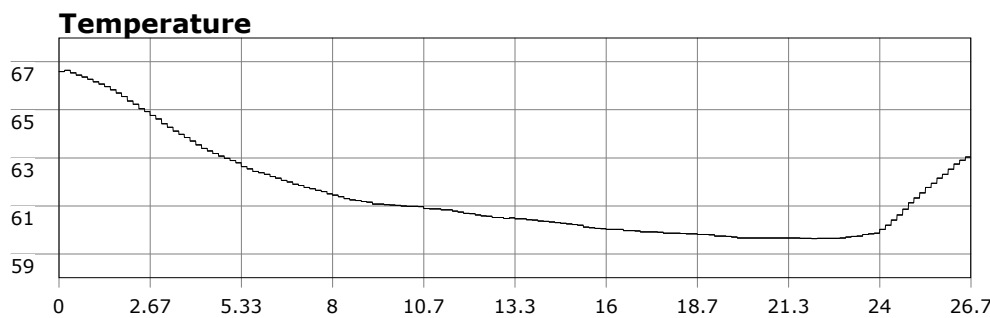
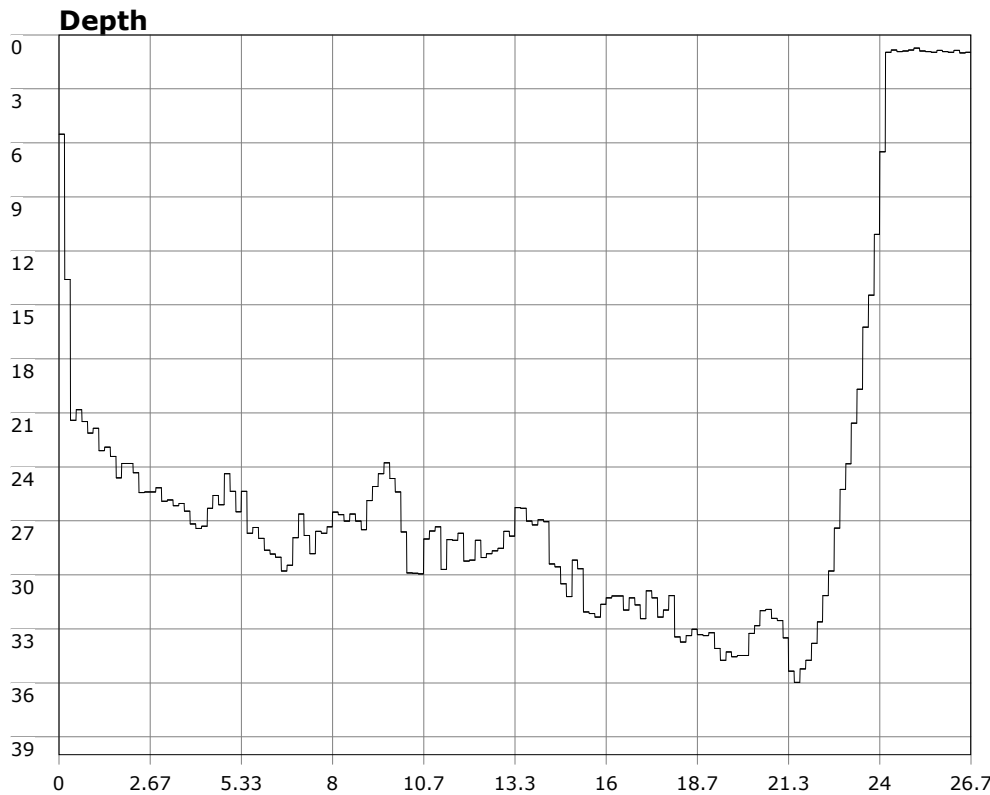


SU-05603 : 7/19/2009 9:18 AM



Interval	10 second(s)
Time	00:26:40 B.T. 00:26:40 B.T. >24 hrs S.I.
Depth	Avg 25.34 ft 25.34 ft Max 35.97 ft 35.97 ft
Temperature	Avg 61.46 °F 61.46 °F Min 59.63 °F 59.63 °F
Ascent Rate	33.19 ft/min (max.) 33.19 ft/min (max.)
Tank Pressure	3200 PSI (in) 1900 PSI (out)
SAC Rate	27.7 PSI/min
Altitude	0 ft
Water Type	Salt Water

Site: 120 deg reef

Buddy: Chris from MI, and a new Vetter

Comments

19 Jul 09

Equipment build: 7mm suit + vest w/hood; one light; 131lbs weight; camera with no strobe, spare air

Quite a few divers in the water today despite the marginal conditions. Swell down significantly from yesterday but water was still green. Went for it anyway--any vis over 3ft is diveable. Entry/exit uneventful though the sets did have to be timed. Saw the usual suspects (garibaldi, sheephead, kelp bass, rock fish, black jacks, nudibranchs) but no sun stars. Odd. Fed the fish a time or two. We did the usual sweep of the reef: east, then south, doubled back north, then headed west to the cove. Despite limited vis we did a good job of staying together. Debriefed for an hour after the dive. Overall a good dive.

Additional Notes
