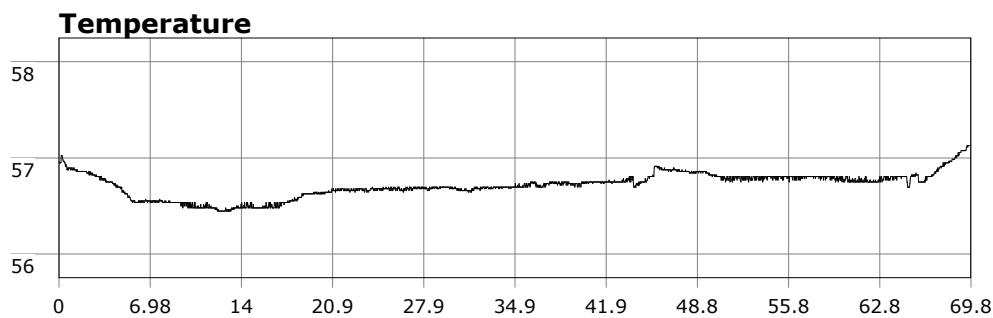


SU-05603 : 2/1/2009 9:24 AM



Interval

1 second(s)

Time

01:09:46 B.T.

01:09:46 B.T.

>24 hrs S.I.

Depth

Avg 25.86 ft 25.86 ft

Max 58.42 ft 58.42 ft

Temperature

Avg 56.71 °F 56.71 °F

Min 56.44 °F 56.44 °F

Ascent Rate

69.87 ft/min (max.)

69.87 ft/min (max.)

Tank Pressure

3100 PSI (in)

900 PSI (out)

SAC Rate

17.9 PSI/min

Altitude

0 ft

Water Type

Salt Water

Site: Long Point

Buddy: The Rev, Dr. D

Comments

2 Feb 09

Equipment build: 7mm suit + vest w/hood; one light; 131lbs weight; camera with no strobe, spare air

Water was flat and entry fairly uneventful except for the thick kelp. We dropped down right on the pinnacle and statue, hung out for a bit then made our way for the cove. Vis about 10ft, just not as clear as I would have thought given the calm conditions. Saw several nudibranchs, rockfish, garibaldi, sheephead, cabizon, and even a black/yellow rockfish. Vis actually improved as we made our way back in. There wasn't any current today so it was a nice, slow kick back to the cove. A great dive.

Additional Notes