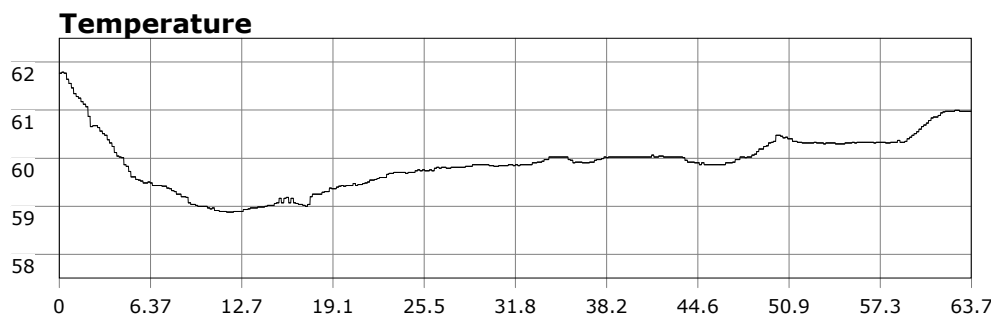


SU-05603 : 11/1/2009 9:02 AM



Interval

10 second(s)

Time

01:03:40 B.T.

01:03:40 B.T.

23:08:10 S.I.

Depth

Avg 36.00 ft 36.00 ft

Max 62.01 ft 62.01 ft

Temperature

Avg 59.91 °F 59.91 °F

Min 58.87 °F 58.87 °F

Ascent Rate

64.83 ft/min (max.)

64.83 ft/min (max.)

Tank Pressure

3300 PSI (in)

1100 PSI (out)

SAC Rate

16.5 PSI/min

Altitude

0 ft

Water Type

Salt Water

Site: Long Point

Buddy: Military Bob, the rev, Psycho, Ted, Angelic

Comments

1 Nov 09
Equipment build: 7mm suit + vest w/hood; one light;
131lbs weight; camera no strobe, knife

The water was flat so we hit the point. Entry was easy and The Rev put us on the statue as usual. We hung there for a bit. Saw an octopus, large yellow nudibranchs, and a very well hidden cabbie. Also saw some really big sunstars.

Additional Notes
