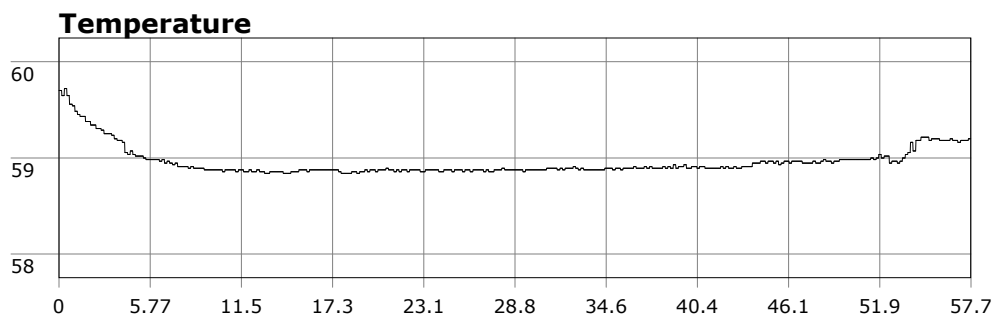


SU-05603 : 12/20/2009 9:22 AM



Interval

10 second(s)

Time

00:57:40 B.T.

00:57:40 B.T.

>24 hrs S.I.

Depth

Avg 27.93 ft 27.93 ft

Max 41.24 ft 41.24 ft

Temperature

Avg 58.96 °F 58.96 °F

Min 58.84 °F 58.84 °F

Ascent Rate

49.88 ft/min (max.)

49.88 ft/min (max.)

Tank Pressure

3300 PSI (in)

1800 PSI (out)

SAC Rate

14.3 PSI/min

Altitude

0 ft

Water Type

Salt Water

Site: 120 deg reef

Buddy:

Comments

20 Dec 09

Equipment build: 7mm suit + vest w/hood; one light;
141lbs weight; camera, strobe, knife

About 11 of us showed up today including several newbies. Half went to the point, half went to 120 reef. I hit 120 reef. Water was calm but despite that vis was a limited 3-5 feet. Didn't matter where I went, vis never opened up. Seemed most critters were on Christmas break but did see a few sunstars on the prowl and some brittlestars. Haven't seen brittlestars in a while so that was cool. Made the usual counterclockwise tour of the reef. Once I hit the backside, I headed due east just because. Not much to see other than killing filed fo empty clam shells.

Additional Notes