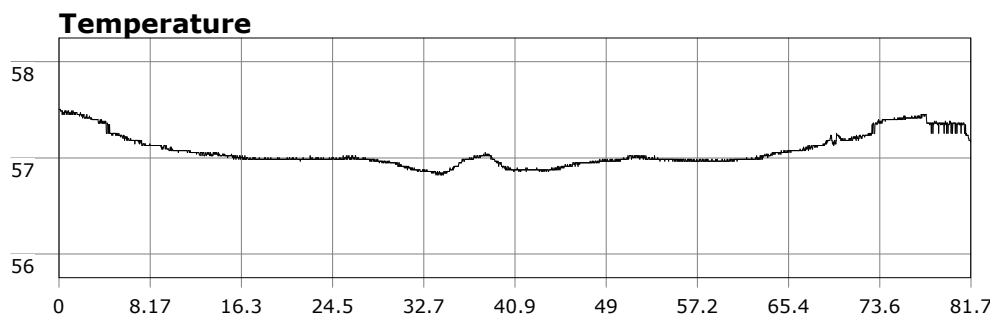


SU-05603 : 3/21/2009 8:27 AM



Interval

1 second(s)

Time

01:21:44 B.T.

01:21:44 B.T.

>24 hrs S.I.

Depth

Avg 23.21 ft 23.21 ft

Max 39.66 ft 39.66 ft

Temperature

Avg 57.07 °F 57.07 °F

Min 56.82 °F 56.82 °F

Ascent Rate

64.05 ft/min (max.)

64.05 ft/min (max.)

Tank Pressure

3250 PSI (in)

750 PSI (out)

SAC Rate

18 PSI/min

Altitude

0 ft

Water Type

Salt Water

Site: Deer Creek

Buddy:

Comments

21 Mar 09

Equipment build: 7mm suit + vest w/hood; one light; 131lbs weight; camera with no strobe, spare air

Had a bit of wanderlust today so I headed up the coast to Deer Creek.

Since I got there early, I had the entire site to myself--no surfers, no beach goers. The water was calm with small to moderate swell. Only the occasional set required attention in the surf zone. With last night's 3-5 ft swell, I wasn't surprised the water looked a bit green, but the ocean called...

I did the medium-length surface kick to the kelp bed and dropped down. Vis was in the 6ft range and under the canopy it was plain dark (glad I had a light!). It was calm on the bottom with minimal surge. I made my way across the large kelp bed on a 240 deg heading then flipped a u-turn and headed back in. I saw the usual cast of characters and spent some quality time with a yellow/black fish that was checking me out. I didn't see any sheep crab which I saw plenty of the last time I dove here.

Despite the limited vis, this was a calm, relaxing dive. With 70 minutes of bottom time, it was another successful "Solo Saturday".

Additional Notes