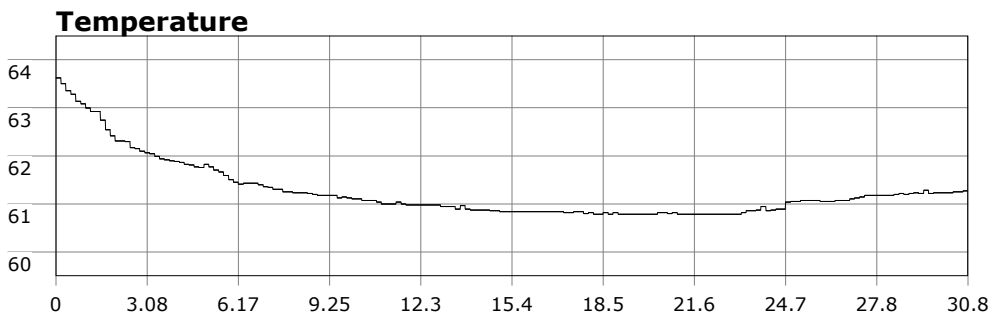
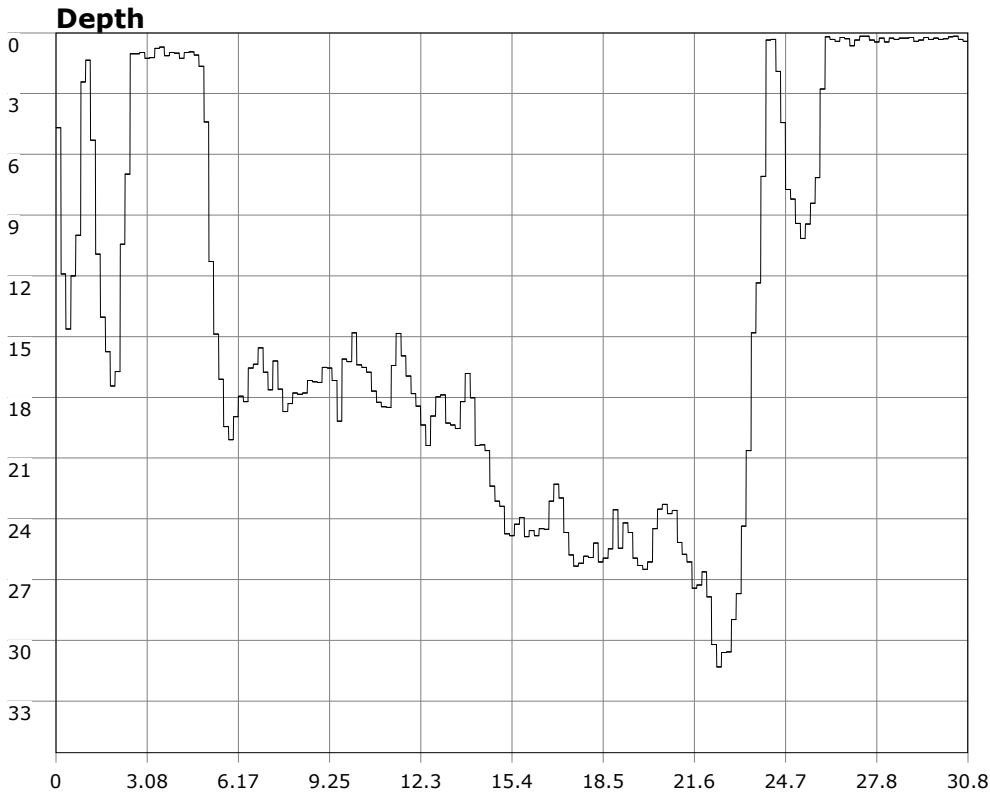


SU-05603 : 11/21/2009 9:46 AM



Interval	10 second(s)
Time	00:30:50 B.T. 00:30:50 B.T. >24 hrs S.I.
Depth	Avg 14.27 ft 14.27 ft Max 31.31 ft 31.31 ft
Temperature	Avg 61.26 °F 61.26 °F Min 60.78 °F 60.78 °F
Ascent Rate	45.42 ft/min (max.) 45.42 ft/min (max.)
Tank Pressure	PSI (in) PSI (out)
SAC Rate	n/a
Altitude	0 ft
Water Type	Salt Water

Site: OML

Buddy: Dr. D.

Comments

21 Nov 09

Equipment build: 7mm suit + vest w/hood; one light; 141lbs weight; camera no strobe, knife

So after unloading my gear at OML in preparation to take a plunge, I found my tank was only half full. Not sure what happened there, but as I was just about to make an emergency tank run, Dr D. pulled in. He was nice enough to hang out while I grabbed a fresh tank. When I got back, a good 4-6 other divers had arrived and were suiting up.

Reports from divers just coming in from 120 reef indicated "so so" vis, so we hooked a right and headed towards the point. Vis was a consistent, though murky, 7-10 feet. Out towards the point vis opened up a little but not much. We saw the bat ray that tends to hang out in the sand

Additional Notes

not too far down the coast from the cove, some octopi, a reasonably large male sheephead, and some bugs. One legal bug found its way into Dr. D's hand but decided not to stay there. Entry/exit fairly easy with the occasional moderate wave to avoid. Surge on the bottom was minimal.

Not much for the combat cam today. Just some octopi and strawberry anemones.