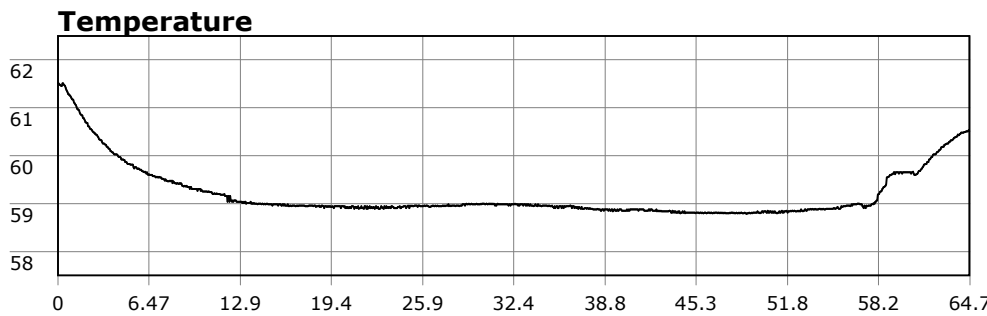


SU-05603 : 11/22/2008 8:23 AM



Interval

1 second(s)

Time

01:04:43 B.T.

01:04:43 B.T.

>24 hrs S.I.

Depth

Avg 28.04 ft 28.04 ft

Max 39.79 ft 39.79 ft

Temperature

Avg 59.20 °F 59.20 °F

Min 58.78 °F 58.78 °F

Ascent Rate

106.75 ft/min (max.)

106.75 ft/min (max.)

Tank Pressure

3300 PSI (in)

1250 PSI (out)

SAC Rate

17.1 PSI/min

Altitude

0 ft

Water Type

Salt Water

Site: 120 deg reef

Buddy: none

Comments

22 Nov 08

Equipment build: 7mm suit + vest w/hood; one light; 13lbs weight; camera no strobe, pony bottle.

First time soloing at 120. Since depths can get around 40ft I strapped on the pony bottle for good measure. Vis was 6-8 feet. Totally relaxing dive and a fun place to cruise solo. Surface kicked out to the reef and dropped down. Not too long after hitting the reef, I came across a really large sun star ~2 ft across. Soon thereafter, I saw a small gobi take a nibble at a spanish shawl--not a bright idea. Luckily, no damage to either party. I made my way around the reef eventually turning north. The kelp canopy is thick here and it got dark fast. After feeding the fish some urchins, I eventually made my way back in. All in all a great dive.

Additional Notes