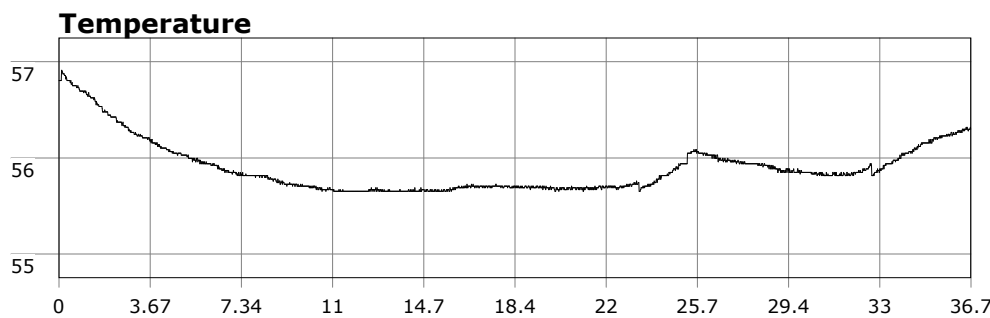


SU-05603 : 2/22/2009 9:07 AM



Interval

1 second(s)

Time

00:36:43 B.T.

00:36:43 B.T.

>24 hrs S.I.

Depth

Avg 23.50 ft 23.50 ft

Max 41.57 ft 41.57 ft

Temperature

Avg 55.90 °F 55.90 °F

Min 55.65 °F 55.65 °F

Ascent Rate

108.69 ft/min (max.)

108.69 ft/min (max.)

Tank Pressure

3250 PSI (in)

2000 PSI (out)

SAC Rate

20.1 PSI/min

Altitude

0 ft

Water Type

Salt Water

Site: 120 deg reef

Buddy: PSD

Comments

22 Feb 09

Equipment build: 7mm suit + vest w/hood; one light;
131lbs weight; camera with no strobe, spare air

Water was much flatter than Sat and had cleaned up a bit. Me and PSD, Todd and new Bob took the plunge. Recent storms have moved the boulders out of the entry making it much easier. Vis was 5-10 feet but good enough to cruise around. Saw garibaldi, perch, kelp bass, sunstar, tube anemones, and one short bug. Great dive for one looking for a quickie to refresh the skills.

Additional Notes