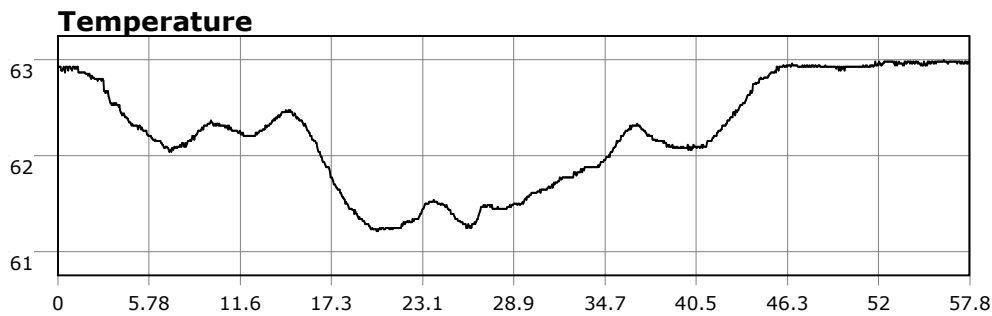


# SU-05603 : 11/23/2008 8:57 AM



## Interval

1 second(s)

## Time

00:57:49 B.T.

00:57:49 B.T.

23:29:59 S.I.

## Depth

Avg 23.76 ft 23.76 ft

Max 39.92 ft 39.92 ft

## Temperature

Avg 62.22 °F 62.22 °F

Min 61.21 °F 61.21 °F

## Ascent Rate

91.23 ft/min (max.)

91.23 ft/min (max.)

## Tank Pressure

3300 PSI (in)

1500 PSI (out)

## SAC Rate

18.3 PSI/min

## Altitude

0 ft

## Water Type

Salt Water

**Site:** 120 deg reef

**Buddy:** PSD

## Comments

23 Nov

Equipment build: 7mm suit + vest w/hood; one light;  
13lbs weight; camera no strobe, pony bottle.

What a difference a day makes. Vis today was outstanding at 25+ feet. Never seen it this clear at 120. As PSD said, the vis was "dream like". Saw the usual wildlife including two big sun stars and the usual tons of fish, starfish, etc. Fed the fish a few times to watch the show. After about an hour we headed in. By far the best dive I've had at 120.

## Additional Notes