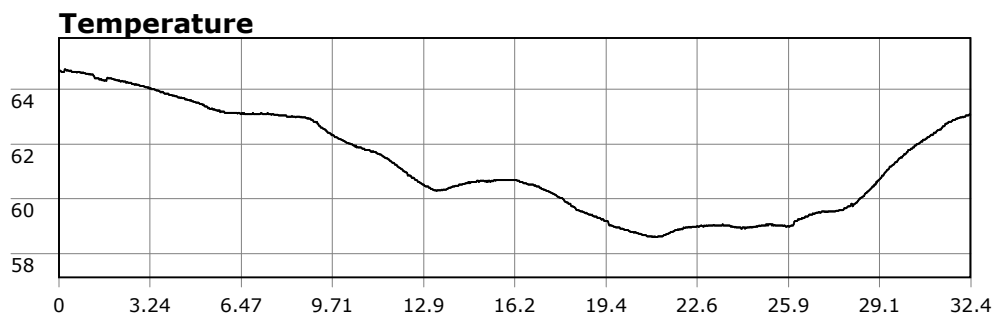


# SU-05603 : 8/24/2008 9:14 AM



<b>Interval</b>	1 second(s)
<b>Time</b>	00:32:21 B.T. 00:32:21 B.T. >24 hrs S.I.
<b>Depth</b>	Avg 27.54 ft 27.54 ft Max 44.12 ft 44.12 ft
<b>Temperature</b>	Avg 61.25 °F 61.25 °F Min 58.60 °F 58.60 °F
<b>Ascent Rate</b>	104.81 ft/min (max.) 104.81 ft/min (max.)
<b>Tank Pressure</b>	3300 PSI (in) 2350 PSI (out)
<b>SAC Rate</b>	16.2 PSI/min
<b>Altitude</b>	0 ft
<b>Water Type</b>	Salt Water

**Site:** The cove at OML (120 deg reef)

**Buddy:** PSD, Steve, Kenny, Dan

## Comments

24 Aug 08

Equipment build: 7mm suit + vest w/hood; two small lights; 14lbs weight; no camera and no pony bottle.

The lot was full of Vets today. Some went to the point while the rest of us went to the cove. Conditions were generally flat though not as flat as last week. The cove looked muddy, but we went anyway as the reef can still be diveable with mud in the cove. We grouped up, got in, reviewed our plan and dropped down. Vis was quite limited at 5-6 feet with the occasional pocket of 8-10 feet. Nonetheless, there is plenty to see on the reef. Today we saw: Urchins, starfish, gorgonias, kelp bass, sheephead, nudibranchs, greenling, rockfish, garibaldi, and perch.

After a bit we made our way back. I stopped briefly to look at a spanish shawl and a garibaldi, and with the vis, I lost sight of everyone fairly quickly. After looking around a bit, I surfaced to find bubbles. Eventually, Psycho surfaced (looking for me), and we paired back up to swim in. I dialed in a 330 deg heading, and we dropped down. With the swell headed towards the 'finger' I swam a 310 heading just

## Additional Notes

---

---

---

---

---

---

---

---

---

---

to stay well away from the rocks. We eventually came upon a kelp wall which told me I was a bit too conservative in staying left of the rocks. We surfaced, hooked up with everyone else, and exited without incident.