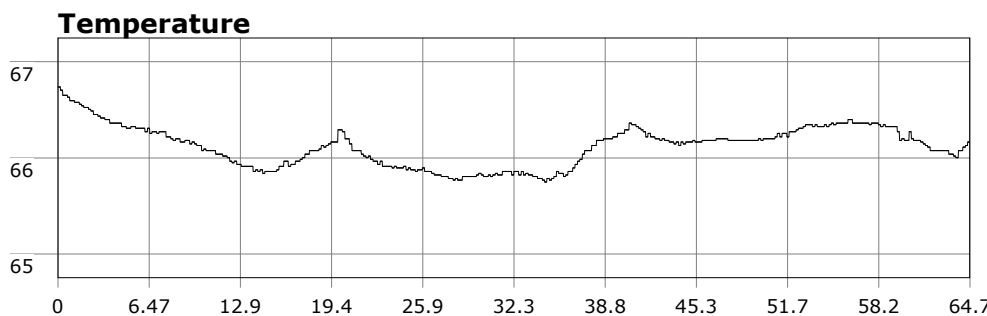
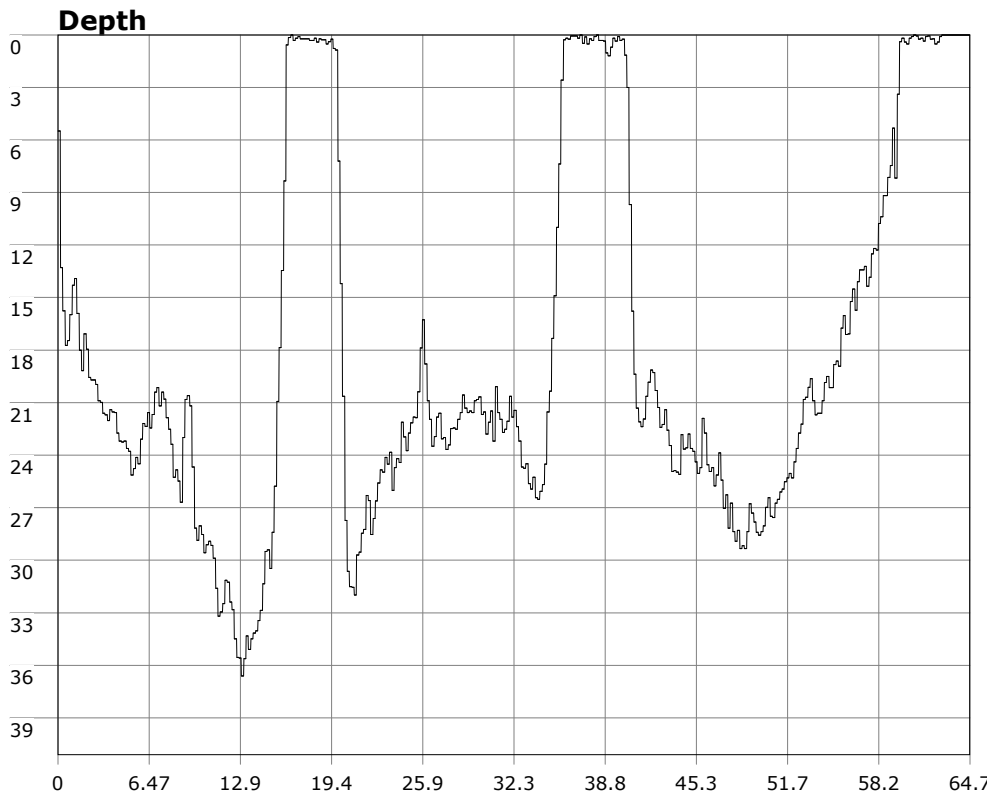


SU-05603 : 10/24/2009 8:51 AM



Interval

10 second(s)

Time

01:04:40 B.T.

01:04:40 B.T.

>24 hrs S.I.

Depth

Avg 18.09 ft 18.09 ft

Max 36.62 ft 36.62 ft

Temperature

Avg 66.12 °F 66.12 °F

Min 65.75 °F 65.75 °F

Ascent Rate

46.58 ft/min (max.)

46.58 ft/min (max.)

Tank Pressure

3350 PSI (in)

1750 PSI (out)

SAC Rate

16 PSI/min

Altitude

0 ft

Water Type

Salt Water

Site: 120 deg reef

Buddy: The Rev and Dr D

Comments

24 Oct 09

Equipment build: 7mm suit + vest w/hood; one light;
131lbs weight; camera no strobe, knife

From land things looked a bit iffy for taking a plunge. The surface was rough and the water didn't look very clean. But boy was that a ploy by the sea gods to keep divers out. In the cove at OML you could easily see the bottom from the surface. The west side of 120 deg reef had 20-30ft vis. Vis started to drop once we got deeper than 25 ft and on the east/northeast side of the reef. But vis never got below 10ft. In places it felt like an island dive. Saw a medium size bat ray hanging out and a sunstar grappling w/ several urchins. Absolutely great dive.

Additional Notes