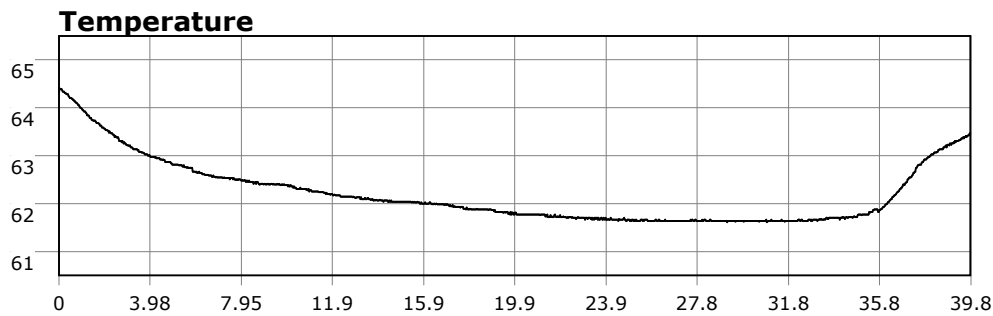
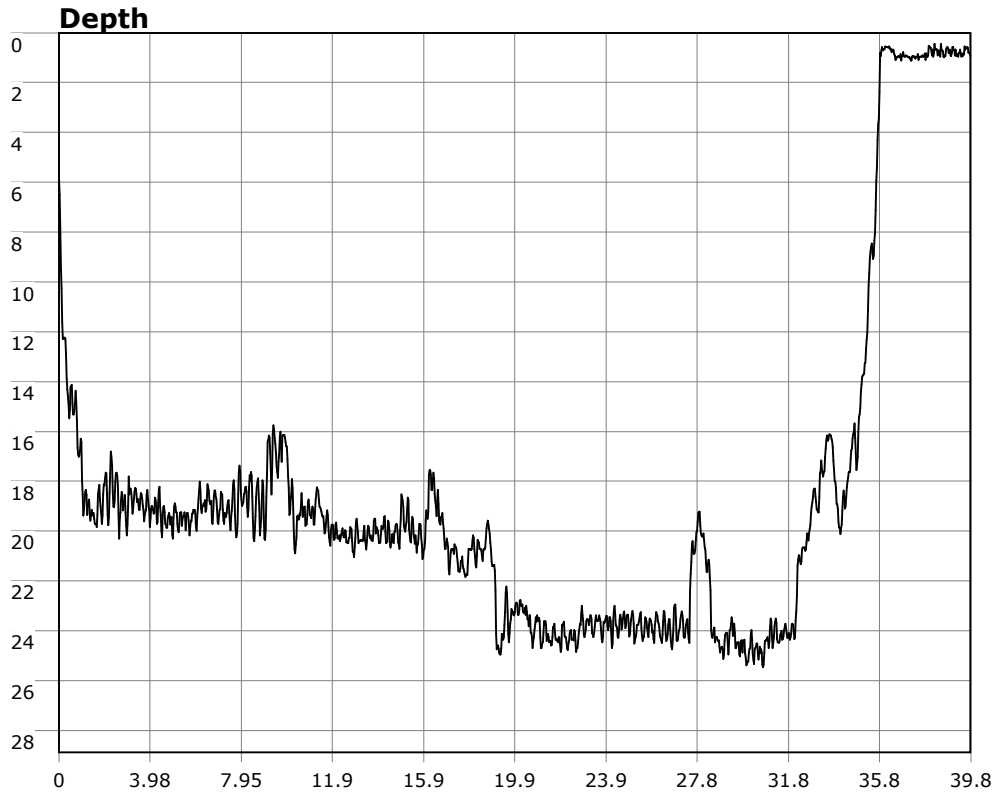


SU-05603 : 10/25/2008 2:26 PM



Interval	1 second(s)
Time	00:39:45 B.T. 00:39:45 B.T. 00:01:39 S.I.
Depth	Avg 18.57 ft 18.57 ft Max 25.46 ft 25.46 ft
Temperature	Avg 62.22 °F 62.22 °F Min 61.61 °F 61.61 °F
Ascent Rate	81.52 ft/min (max.) 81.52 ft/min (max.)
Tank Pressure	3250 PSI (in) 2250 PSI (out)
SAC Rate	16.3 PSI/min
Altitude	0 ft
Water Type	Salt Water

Site: christmas tree cove

Buddy:

Comments

25 Oct 08

Equipment build: 7mm suit + vest w/hood; one light;
13lbs weight; camera no strobe.

After getting back from a TDY to Valley Forge, I decided to bang out a quick dive at Christmas Tree. With the afternoon sun beating down, I was quite hot by the time I got to the water. The tide was low so there was a bit more scrambling over the rocks to get in. And this also reduced the buffer zone before the rocks get covered in urchins. I initially hit the wash rock off to the left, but with the low tide and surge I didn't stay long. Instead I made my way to my usual spot on the right-center part of the cove. I simply hung out with the fish, busting up urchins and watching the show. The water was a bit cloudy with vis in the 8-10 ft range. After a bit I could see the swell was picking up so I decided to head in. The waves hitting the entry point were big enough that I didn't want to exit there. Instead I exited on the right side of the rock slide (when facing the beach). The scramble over the rockslide wasn't too bad, so this is a good alternate exit when needed. As on previous dives I saw many senioritas, sheephead, garibaldi, perch, some gobis, etc.

Additional Notes