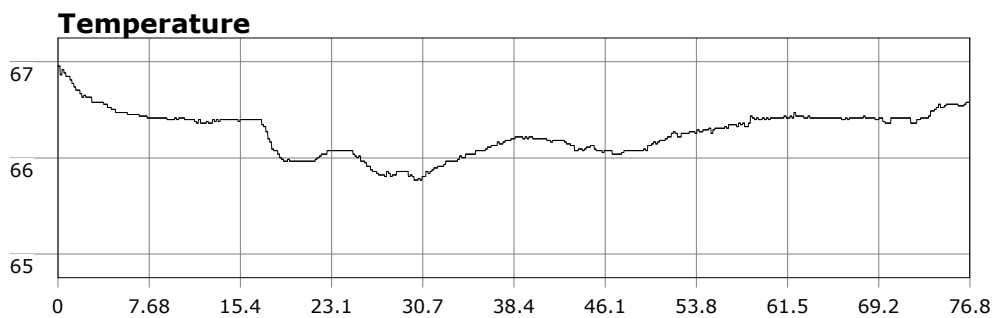


SU-05603 : 10/25/2009 9:12 AM



| | |
|----------------------|---|
| Interval | 10 second(s) |
| Time | 01:16:50 B.T. 01:16:50 B.T. 23:16:37 S.I. |
| Depth | Avg 24.72 ft 24.72 ft Max 44.15 ft 44.15 ft |
| Temperature | Avg 66.26 °F 66.26 °F Min 65.77 °F 65.77 °F |
| Ascent Rate | 66.19 ft/min (max.) 66.19 ft/min (max.) |
| Tank Pressure | 3350 PSI (in) 1250 PSI (out) |
| SAC Rate | 15.8 PSI/min |
| Altitude | 0 ft |
| Water Type | Salt Water |

Site: OML (cove towards the point and back)

Buddy: The Rev, Dr D and Steve

Comments

24 Oct 09
Equipment build: 7mm suit + vest w/hood; one light;
131lbs weight; camera no strobe, knife

With the swell too big for the point, we headed for the cove and then kicked towards the point. Vis in the 15ft range. Saw the usual fish but also several octopi including one having lunch. Also saw a few bugs the 1-2 legals were too hard to get. Also saw a medium sized bat ray and a flattie.

Additional Notes
