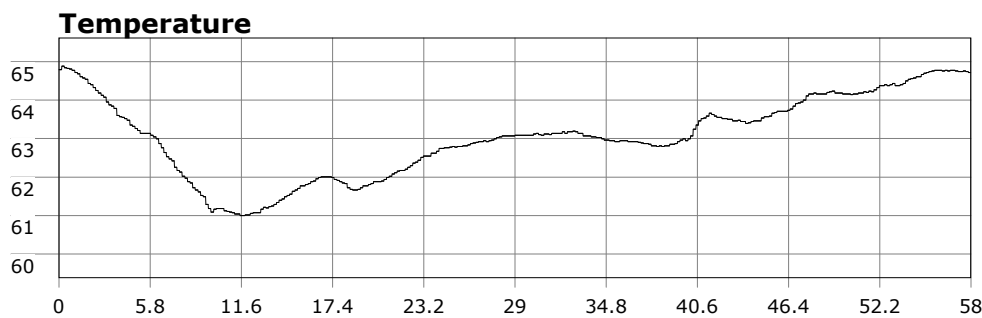


SU-05603 : 9/27/2009 8:54 AM



Interval

10 second(s)

Time

00:58:00 B.T.

00:58:00 B.T.

22:53:44 S.I.

Depth

Avg 29.74 ft 29.74 ft

Max 52.86 ft 52.86 ft

Temperature

Avg 63.05 °F 63.05 °F

Min 61.00 °F 61.00 °F

Ascent Rate

61.72 ft/min (max.)

61.72 ft/min (max.)

Tank Pressure

3250 PSI (in)

1250 PSI (out)

SAC Rate

18.4 PSI/min

Altitude

0 ft

Water Type

Salt Water

Site: Long Point

Buddy: Military Bob, Steve, Chris

Comments

27 Sep 09

Equipment build: 7mm suit + vest w/hood; one light; 131lbs weight; camera with no strobe, spare air, knife

A good 8 divers in the water at the Point. Very overcast due to the marine layer but vis a good 20 feet. Entry required timing the swell but it was doable. We didn't hand long at the point but instead made a slow scenic route back. Lots of wildlife--garibaldi, sheephead, rockfish, sunstars, all types of anemones, but no bugs. Overall a great dive.

Additional Notes