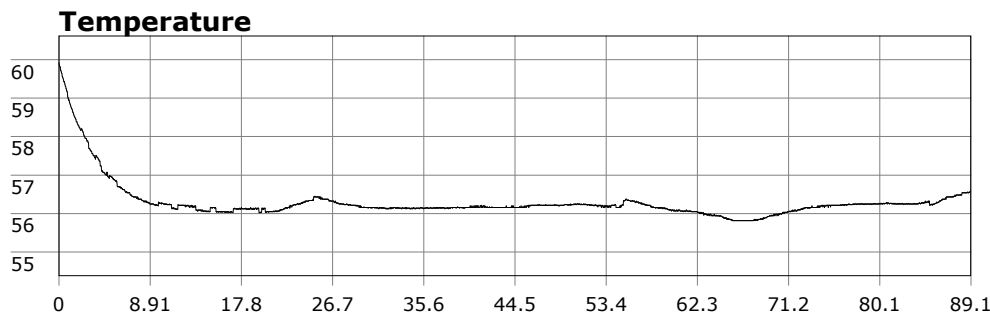


# SU-05603 : 2/28/2009 8:50 AM



## Interval

1 second(s)

## Time

01:29:03 B.T.

01:29:03 B.T.

>24 hrs S.I.

## Depth

Avg 17.00 ft 17.00 ft

Max 39.59 ft 39.59 ft

## Temperature

Avg 56.29 °F 56.29 °F

Min 55.81 °F 55.81 °F

## Ascent Rate

75.70 ft/min (max.)

75.70 ft/min (max.)

## Tank Pressure

3250 PSI (in)

1000 PSI (out)

## SAC Rate

17 PSI/min

## Altitude

0 ft

## Water Type

Salt Water

**Site:** OML

**Buddy:** Rev Al

## Comments

28 Feb 09

Equipment build: 7mm suit + vest w/hood; one light;  
131lbs weight; camera with no strobe, spare air

Great dive today with the Rev at OML. Vis 15ft. This time we kicked up towards the point and then came back. Never done this route before but it's really good. Lots of structure all the way. Saw many bugs (some in the open), an octopus, and a large bat ray. Great dive.

## Additional Notes