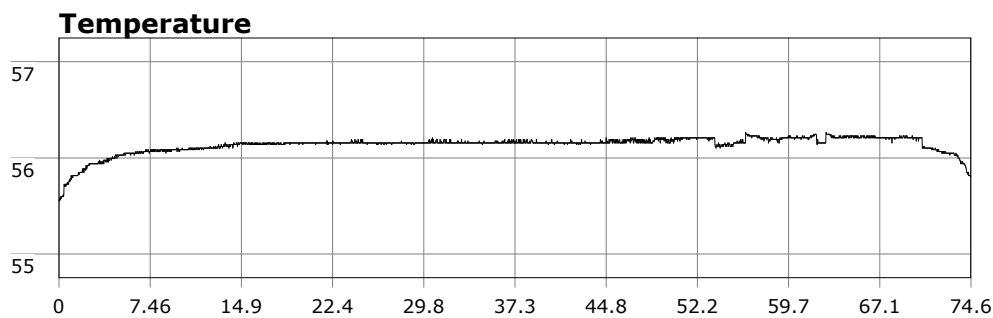


SU-05603 : 1/2/2009 8:58 AM



Interval

1 second(s)

Time

01:14:35 B.T.

01:14:35 B.T.

22:25:28 S.I.

Depth

Avg 21.47 ft 21.47 ft

Max 30.37 ft 30.37 ft

Temperature

Avg 56.13 °F 56.13 °F

Min 55.54 °F 55.54 °F

Ascent Rate

56.29 ft/min (max.)

56.29 ft/min (max.)

Tank Pressure

3250 PSI (in)

1250 PSI (out)

SAC Rate

16.4 PSI/min

Altitude

0 ft

Water Type

Salt Water

Site: 120 Deg Reef, OML

Buddy:

Comments

2 Jan 09

Equipment build: 7mm suit + vest w/hood; one light; 131lbs weight; camera with strobe,

Another great dive at 120 deg reef. Vis a good 15 feet. Still had problems with the camera but got a few good pics and video anyway. Saw usual assortment of fish (sheephead, kelp bass, senioritas, rock fish, garibaldi), one short bug, some sunstars, many cool nudibranchs, and more. Next time I'll use regular batteries in the camera and see if that helps.

Additional Notes