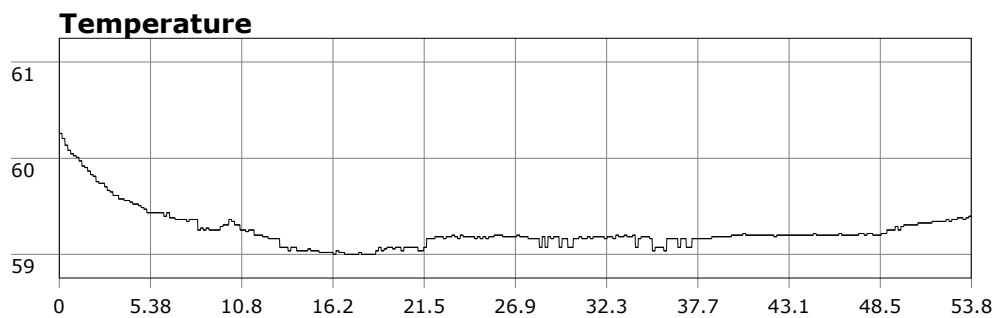
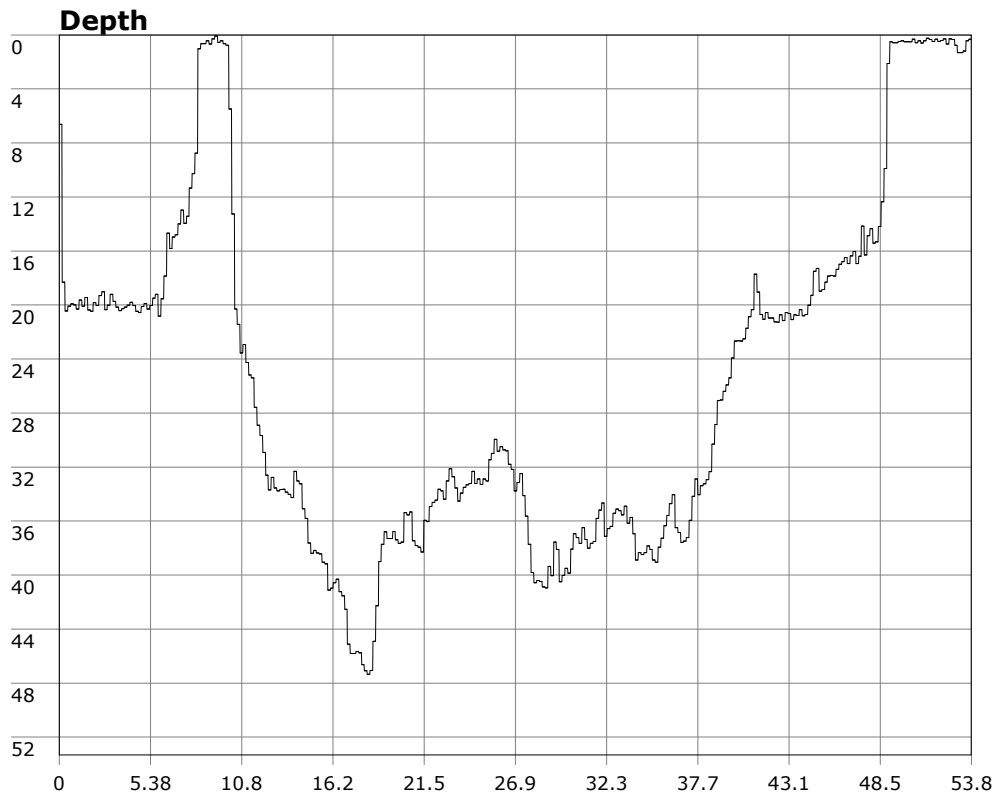


SU-05603 : 10/31/2009 9:00 AM



Interval

10 second(s)

Time

00:53:50 B.T.

00:53:50 B.T.

>24 hrs S.I.

Depth

Avg 25.47 ft 25.47 ft

Max 47.36 ft 47.36 ft

Temperature

Avg 59.24 °F 59.24 °F

Min 59.00 °F 59.00 °F

Ascent Rate

46.58 ft/min (max.)

46.58 ft/min (max.)

Tank Pressure

3300 PSI (in)

1800 PSI (out)

SAC Rate

15.9 PSI/min

Altitude

0 ft

Water Type

Salt Water

Site: Vet's Park for the pumpkin carving contest

Buddy:

Comments

31 Oct 09

Equipment build: 7mm suit + vest w/hood; one light;
131lbs weight; camera no strobe, knife

Great day today. 20-30 divers and non divers showed up for the contest. At least 10 in the water. I watched the carving for a bit then tooled south to see what I could see. Saw the usual sheep crab, horn shark, etc. The BBQ afterwards was outstanding.

Additional Notes
