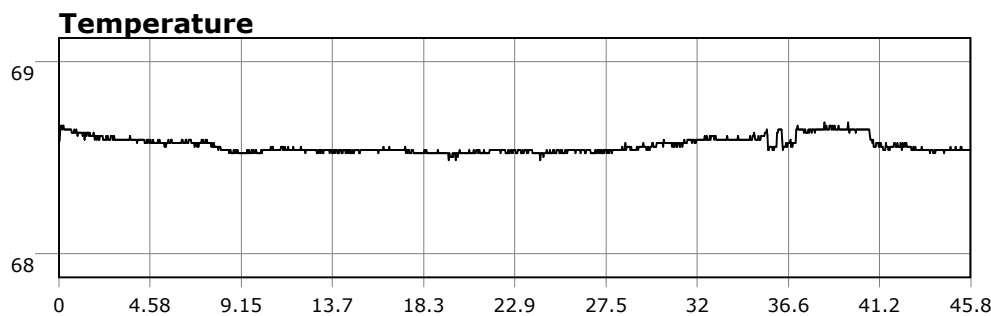


SU-05603 : 8/3/2008 9:13 AM



Interval

1 second(s)

Time

00:45:45 B.T.

00:45:45 B.T.

>24 hrs S.I.

Depth

Avg 23.65 ft 23.65 ft

Max 40.43 ft 40.43 ft

Temperature

Avg 68.56 °F 68.56 °F

Min 68.49 °F 68.49 °F

Ascent Rate

64.05 ft/min (max.)

64.05 ft/min (max.)

Tank Pressure

3250 PSI (in)

1600 PSI (out)

SAC Rate

21.3 PSI/min

Altitude

0 ft

Water Type

Salt Water

Site: Old Marineland, 120 deg reef

Buddy: Rich and the Beach Crabs

Comments

3 Aug 08

Equipment build: 7mm suit + vest w/hood; small light; 14lbs weight; no camera and no pony bottle.

First dive at OML. Originally was headed to the point but revectorred given the cove is a better bet for newbies. Swell was low so entry was a straight forward D-Day beach crawl. The vis opened up once at the rocks and was consistently 10-15 feet. This is an extremely good lookie lou dive. Plenty of structure, wildlife and moderate depths allow good bottom time. Water was consistently 68 deg. For the first time I was almost TOO warm on a west coast dive. Could get used to that...

Wildlife included: urchins, starfish, gorgonias, octopus, kelp bass, sheephead, nudibranchs, a really big bug, gobis, blennies, rockfish, garibaldi, perch, and brittlestars (first time to see one in person). This would be a great combat-cam dive were it not for the camera's destruction on the rocks.

Additional Notes