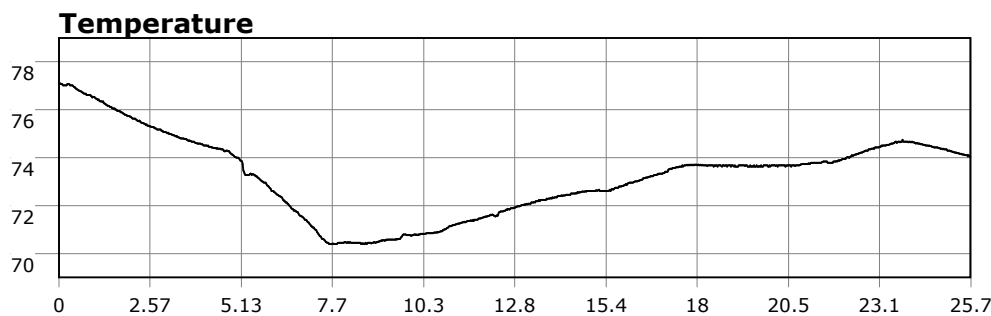
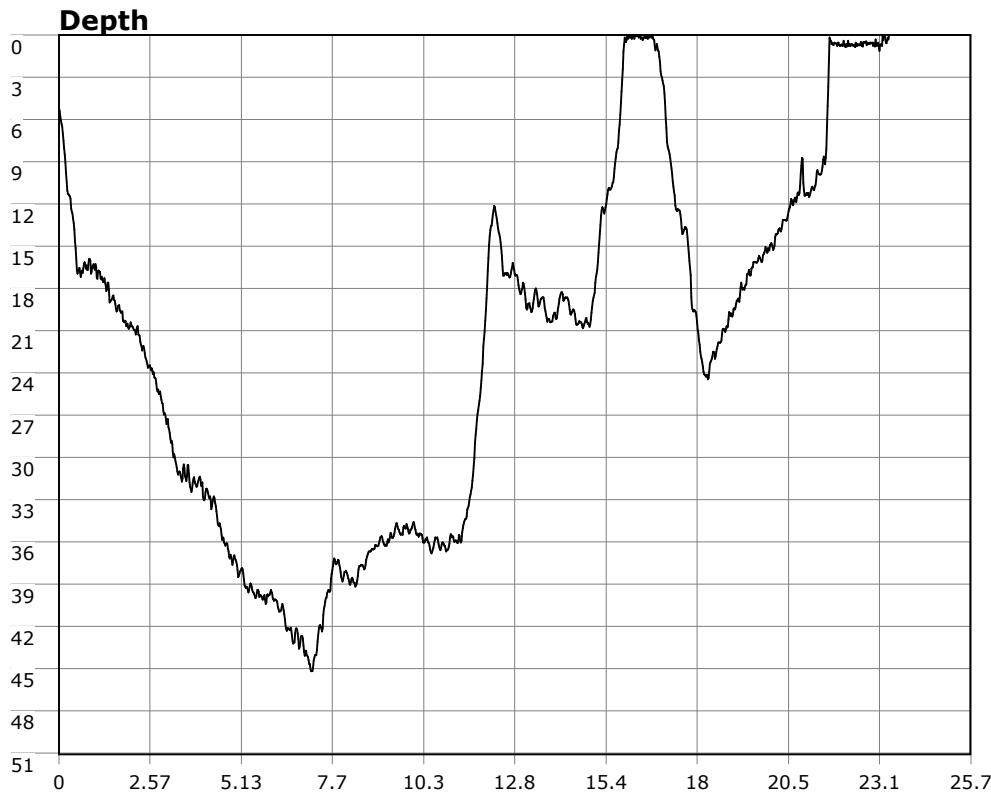


SU-05603 : 8/6/2008 6:35 PM



Interval

1 second(s)

Time

00:25:39 B.T.

00:25:39 B.T.

>24 hrs S.I.

Depth

Avg 20.33 ft 20.33 ft

Max 45.19 ft 45.19 ft

Temperature

Avg 73.25 °F 73.25 °F

Min 70.39 °F 70.39 °F

Ascent Rate

106.75 ft/min (max.)

106.75 ft/min (max.)

Tank Pressure

3300 PSI (in)

2500 PSI (out)

SAC Rate

19.4 PSI/min

Altitude

0 ft

Water Type

Salt Water

Site: Vets Park, Redondo Beach

Buddy:

Comments

6 Aug 08

Equipment build: 7mm suit + vest w/hood; small light; 14lbs weight; camera and no pony bottle.

This was one of those dives you debate whether or not to log. Yeah, you got in and dropped down, but didn't stay long. Ultimately, I decided it should count since I did some compass work, saw at least one flattie, and was down long enough to trigger a safety stop.

This dive can be summed up as "extreme green". Vis was in the 5 ft range. Almost thought I was back at the boathouse. Given the wind and surface chop I opted out of the snorkel and just used the reg for the kick out and back. The swell was a bit more than I usually get on my Sat morning stints and the surface kick out was a bit of a roller coaster (but tame compared to La Janelle). I did my usual pattern of dropping down and heading south, cruising at the 35 ft range. Other than a starfish or two and the flattie, there was nothing to be had. So I did the sensible thing and called it. The return trip was done underwater and the surge became noticeable at about 13 feet. The exit went well and was uneventful. I came out south of the steps and didn't have that blasted sand step to mess with. I may make this my exit from now on. Some Vets were gearing up as I was leaving and indicated "you gotta go deep for the vis". Or, as I've seen so far, just go early on the weekend

Additional Notes