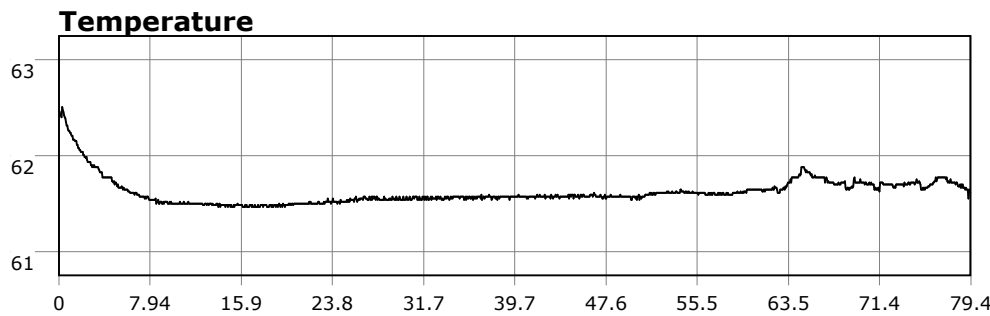
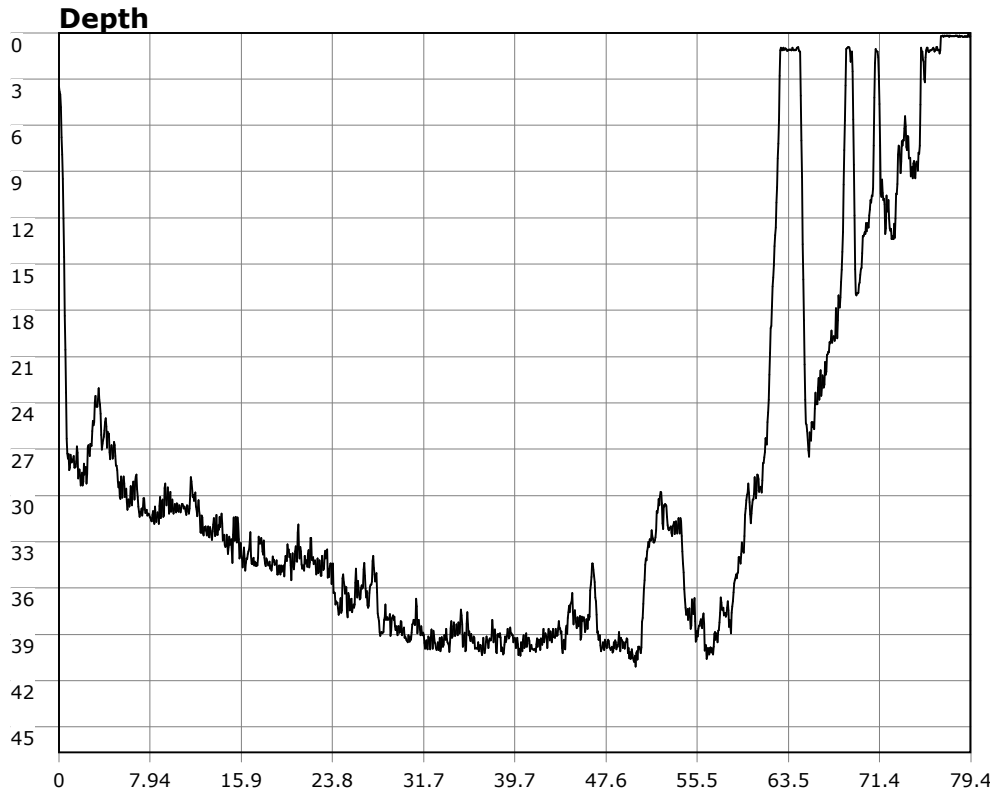


# SU-05603 : 12/6/2008 9:23 AM



<b>Interval</b>	1 second(s)
<b>Time</b>	01:19:21 B.T. 01:19:21 B.T. >24 hrs S.I.
<b>Depth</b>	Avg 29.11 ft 29.11 ft Max 41.08 ft 41.08 ft
<b>Temperature</b>	Avg 61.62 °F 61.62 °F Min 61.45 °F 61.45 °F
<b>Ascent Rate</b>	83.46 ft/min (max.) 83.46 ft/min (max.)
<b>Tank Pressure</b>	3100 PSI (in) 750 PSI (out)
<b>SAC Rate</b>	15.8 PSI/min
<b>Altitude</b>	0 ft
<b>Water Type</b>	Salt Water

**Site:** 120 Deg Reef

**Buddy:**

## Comments

6 Dec 08

Equipment build: 7mm suit + vest w/hood; one light;  
11lbs weight; camera no strobe, pony bottle.

Good dive today at 120. Vis from the ridge looked doable though somewhat green near the cove. I guesstimated vis would be 5-8 ft and it came in at 8-10ft. I surface kicked out a good bit south from the finger to hopefully find the clearest water. I dropped down and made my way counterclockwise around the reef, staying on the perimeter. I'm still amazed at the amount of wildlife at this site and it will come check you out when you sit still. Saw the usual fish including a big sheephead, a large sunstar, and a very small spanish shawl hanging on for dear life in the current. Though the vis wasn't great it was more than diveable and I still had a great dive.

## Additional Notes