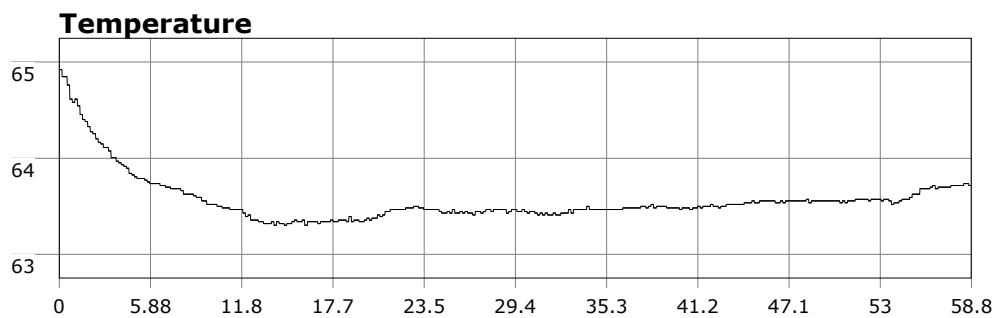


# SU-05603 : 11/7/2009 9:37 AM



## Interval

10 second(s)

## Time

00:58:50 B.T.

00:58:50 B.T.

>24 hrs S.I.

## Depth

Avg 25.77 ft 25.77 ft

Max 44.06 ft 44.06 ft

## Temperature

Avg 63.56 °F 63.56 °F

Min 63.30 °F 63.30 °F

## Ascent Rate

44.64 ft/min (max.)

44.64 ft/min (max.)

## Tank Pressure

3250 PSI (in)

1500 PSI (out)

## SAC Rate

16.9 PSI/min

## Altitude

0 ft

## Water Type

Salt Water

**Site:** OML

**Buddy:** The Rev, Dr. D

## Comments

7 Nov 09

Equipment build: 7mm suit + vest w/hood; one light; 141lbs weight; camera no strobe, knife

After being on the fence for quite a few minutes this morning, I was literally just getting ready to leave when Dr. D. and The Rev pulled up. Conditions at the cove were a bit foamy and muddy and the waves at the point were easily surfable. We debated entry at the cove for a bit and were just about to call it when we saw Nice Bob, Joe, and Jordan exiting at the cove. They reported good vis at 120 reef so that's all we needed to hear. Instead of 120 reef, we hooked a right towards the point.

Entry/Exit a bit tricky due to the moderate surf, but doable. Vis in the 8-10 ft range and better in spots. It was quite surgy even at depth. Near the cove it was like diving the front side of the jetty at the boathouse: Hang on to kelp, wait for the surge to shift in the right direction, and kick baby kick. Given the bleak swell forecast for tomorrow, I'm glad we got in.

The CDIP model for north of Pt. Conception looks REALLY bad.

## Additional Notes

---

---

---

---

---

---

---

---

---

---