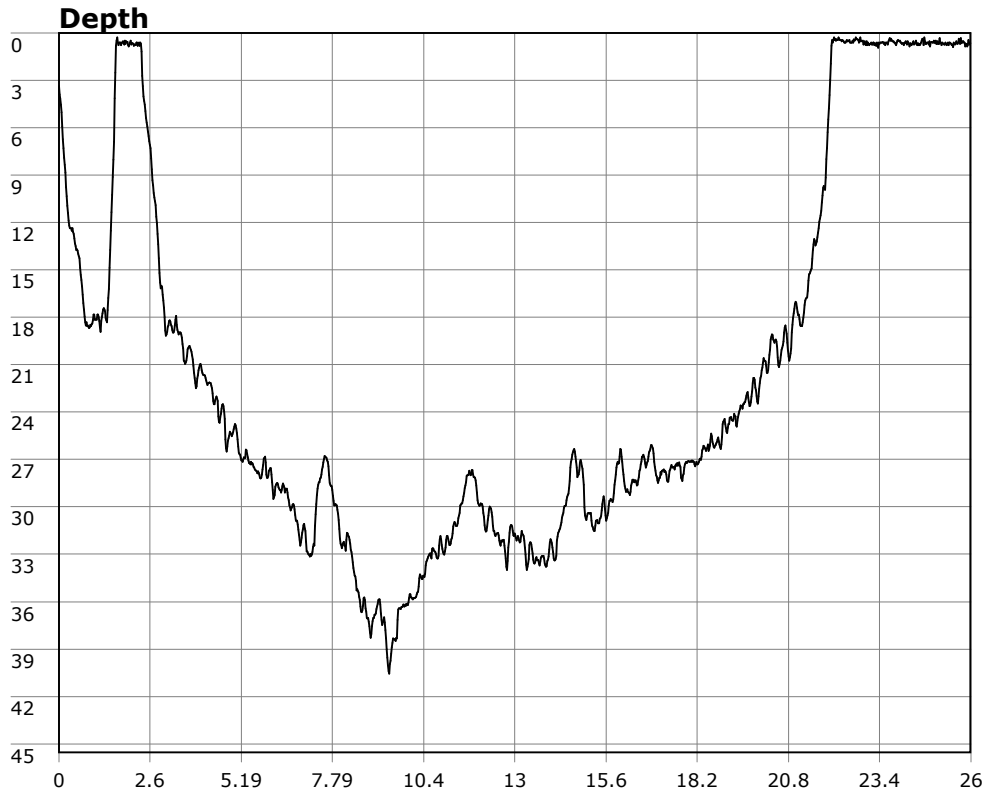


SU-05603 : 9/7/2008 9:33 AM



Interval

1 second(s)

Time

00:25:57 B.T.

00:25:57 B.T.

23:00:19 S.I.

Depth

Avg 21.57 ft 21.57 ft

Max 40.56 ft 40.56 ft

Temperature

Avg 58.20 °F 58.20 °F

Min 57.69 °F 57.69 °F

Ascent Rate

100.93 ft/min (max.)

100.93 ft/min (max.)

Tank Pressure

3200 PSI (in)

2500 PSI (out)

SAC Rate

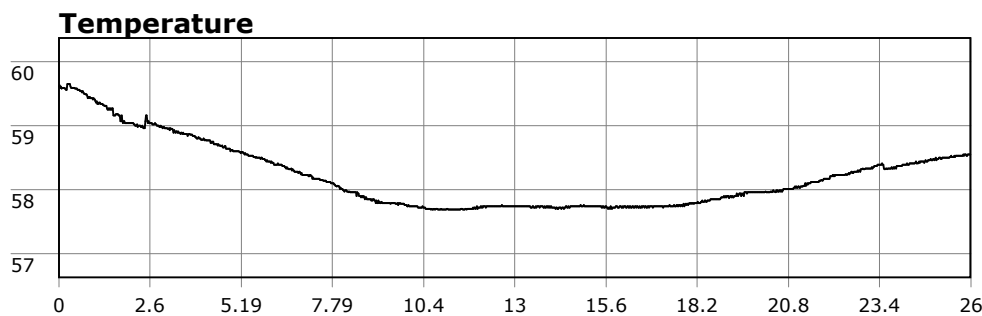
16.5 PSI/min

Altitude

0 ft

Water Type

Salt Water



Site: OML, 120 Deg reef

Buddy: Psycho, Ice John (sorta)

Comments

7 Sep 08

Equipment build: 7mm suit + vest w/hood; two small lights; 13lbs weight; no camera and no pony bottle.

Original plan was the point as the water from the ridge looked dead flat. Once we got there a few big rollers came in that gave everyone a pause. Most decided to go in any way as there were breaks between the big waves. Me and Psycho bailed and headed for the cove. Once we got there we hooked up with Ice John and planned our dive. Basically if vis was no good on the reef, we'd bail at 20 minutes and come in. Ice John disappeared with no notice or explanation (can we say bad dive protocol?). We looked for a few minutes then submerged and headed for the reef. Vis was 5 feet and required a delicate balance between looking at the reef and not losing Psycho due to the limited vis. The usual reef critters were out--garibaldi, greenlings, sheephead, etc.

Right at the 15min mark, we set a reciprocal heading and made our way back. Swell had actually picked up a bit and made the rocky exit a good bit more sporty than the entry. About the time we got out we saw the point divers surfacing which suggests they didn't have very good vis and headed straight for the cove. Not the best dive but the debrief more than made up for it. There was BBQ pork, chicken, steak, shrimp, fresh scallops that Bob had picked up on the dive and more.

Additional Notes