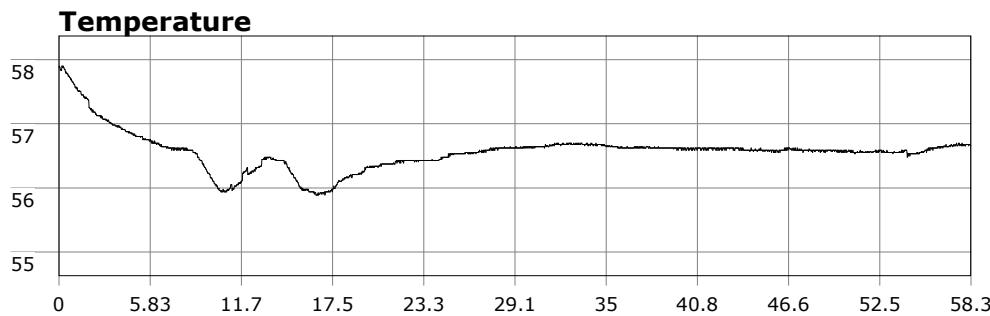


SU-05603 : 3/8/2009 9:03 AM



Interval

1 second(s)

Time

00:58:17 B.T.

00:58:17 B.T.

>24 hrs S.I.

Depth

Avg 23.32 ft 23.32 ft

Max 55.86 ft 55.86 ft

Temperature

Avg 56.57 °F 56.57 °F

Min 55.89 °F 55.89 °F

Ascent Rate

159.16 ft/min (max.)

159.16 ft/min (max.)

Tank Pressure

3250 PSI (in)

1500 PSI (out)

SAC Rate

17.7 PSI/min

Altitude

0 ft

Water Type

Salt Water

Site: Long Point

Buddy: PSD and Angelic

Comments

8 Mar 09

Equipment build: 7mm suit + vest w/hood; one light;
131lbs weight; camera with no strobe, spare air

Great dive today at OML. 8 or so divers in the water at the Point. Water was flat and calm. We kicked west of the point a little to drop down on the wreck in search of lobster. Vis here was somewhat limited and it was dark and creepy. We then headed towards the cove. Once we got to 40 feet or so the vis opened up to 10-15 feet and it was a great cruise back to the cove. We saw nudibranchs, tube anemones, starfish, garibaldi, sheephead, rockfish and a nest of bugs. Angelic met me and PSD about halfway back to the cove and stuck with us the rest of the way. Great dive.

Additional Notes