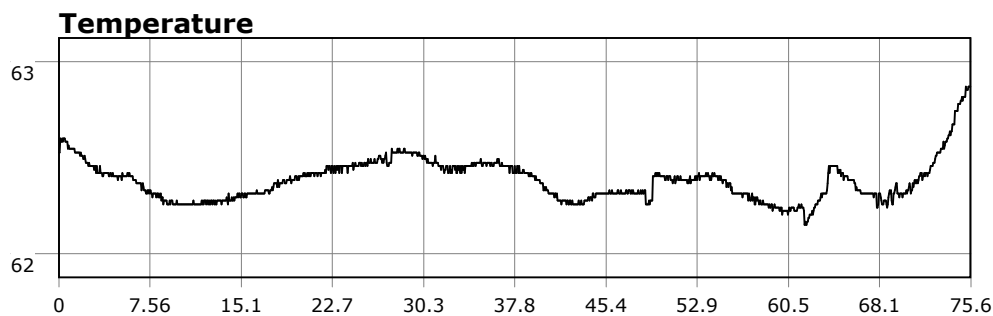


# SU-05603 : 11/8/2008 9:20 AM



## Interval

1 second(s)

## Time

01:15:38 B.T.

01:15:38 B.T.

00:00:49 S.I.

## Depth

Avg 11.67 ft 11.67 ft

Max 19.15 ft 19.15 ft

## Temperature

Avg 62.38 °F 62.38 °F

Min 62.15 °F 62.15 °F

## Ascent Rate

77.64 ft/min (max.)

77.64 ft/min (max.)

## Tank Pressure

2899 PSI (in)

1200 PSI (out)

## SAC Rate

16.8 PSI/min

## Altitude

0 ft

## Water Type

Salt Water

**Site:** Malaga Cove

**Buddy:** The Rev

## Comments

8 Nov 08

Equipment build: 7mm suit + vest w/hood; one light;  
13lbs weight; camera no strobe.

Had originally planned to dive 120 deg reef but was told the beach was closed. So I scoped Malaga instead. Though I originally planned a solo dive, I bumped into The Rev and Dr D who apparently had the same game plan. We suited up entered over the rocks by the spa. We then headed 240-270 deg down the coast for a long while before making a u-turn and exiting at the beach. Vis was very good for this location (10+feet). As always at this spot you have to search a bit to find the wildlife but when you find it it's really cool. Wildlife today included greenling, garibaldi, sheephead, really large starfish, opal eye (I think) and others. We busted up urchins and fed the fish for fun, with the Rev feeding fish from his hand. We scored well over an hour of bottom time. All in all a really great dive.

This is the second part of the dive after we lost Dr D and had surfaced to look for him.

## Additional Notes