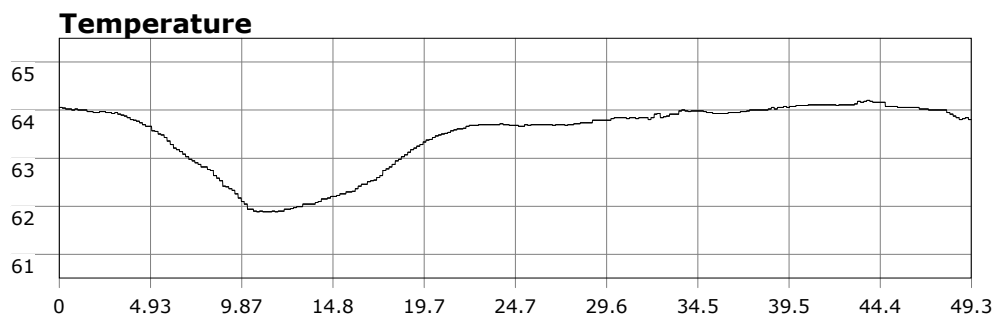


# SU-05603 : 11/8/2009 9:35 AM



<b>Interval</b>	10 second(s)
<b>Time</b>	00:49:20 B.T. 00:49:20 B.T. 22:58:52 S.I.
<b>Depth</b>	Avg 18.54 ft 18.54 ft Max 40.72 ft 40.72 ft
<b>Temperature</b>	Avg 63.48 °F 63.48 °F Min 61.88 °F 61.88 °F
<b>Ascent Rate</b>	40.95 ft/min (max.) 40.95 ft/min (max.)
<b>Tank Pressure</b>	3250 PSI (in) 2000 PSI (out)
<b>SAC Rate</b>	16.4 PSI/min
<b>Altitude</b>	0 ft
<b>Water Type</b>	Salt Water

**Site:** 120 Deg reef

**Buddy:** Richard the Brit, The Rev

## Comments

7 Nov 09  
Equipment build: 7mm suit + vest w/hood; one light;  
141lbs weight; camera no strobe, knife

The swell forecast improved quite a bit by the time this morning rolled around. West facing beaches were getting hammered but south-facing OML was still a doable do. The point was surfable yet again, so it was ruled out. There were occasional big waves rolling into the cove but they were space out. Like yesterday, we eyeballed the conditions for a bit until Richard The Brit made the first commitment to suiting up. Myself and The Rev followed suit. About four other Dive Veters sat this one out.

With some timing, entry/exit were uneventful. Vis was all over the place. In the cove, the bottom was clearly visible from the surface. In spots on the reef, vis was 25-30 feet. But then you'd kick a minute and find yourself in 5 feet of vis. In other areas, vis on the bottom was crap, but going up just a few feet yielded 30 ft vis.

Surge was heavy throughout so being peripherally aware of what the nearby kelp

## Additional Notes

---

---

---

---

---

---

---

---

---

---

was doing proved very helpful in being able to move around w/out getting thrown into a urchin bed. W/ the swell I didn't even bother w/ any macro shots.