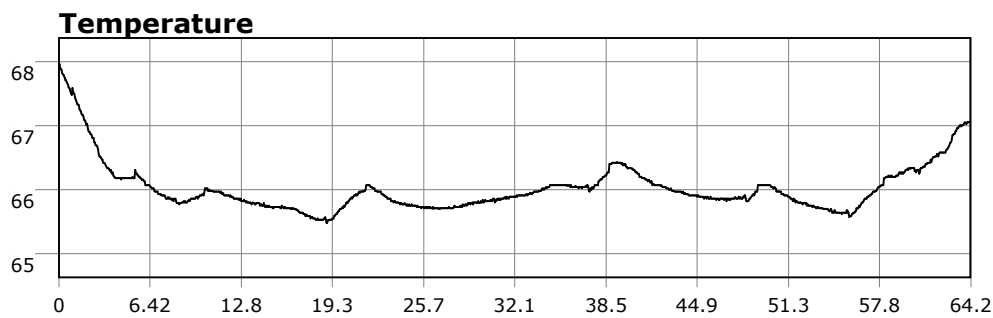
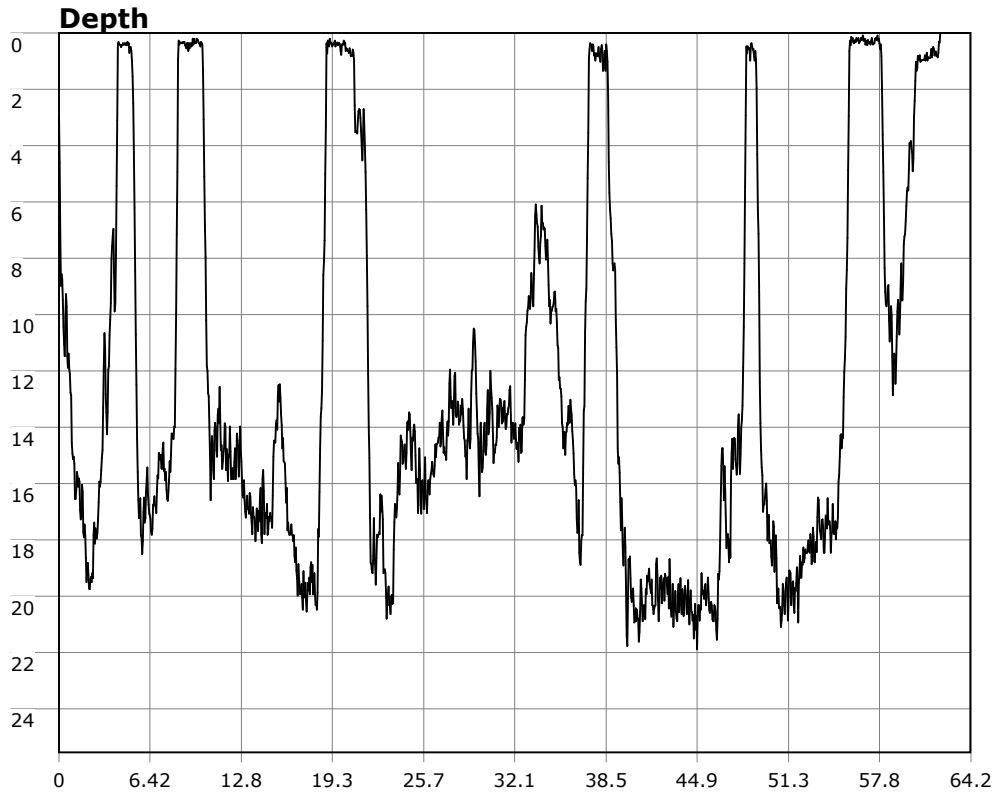


# SU-05603 : 9/21/2008 10:55 AM



## Interval

1 second(s)

## Time

01:04:11 B.T.

01:04:11 B.T.

>24 hrs S.I.

## Depth

Avg 12.07 ft 12.07 ft

Max 22.03 ft 22.03 ft

## Temperature

Avg 66.02 °F 66.02 °F

Min 65.48 °F 65.48 °F

## Ascent Rate

85.40 ft/min (max.)

85.40 ft/min (max.)

## Tank Pressure

3300 PSI (in)

2000 PSI (out)

## SAC Rate

14.9 PSI/min

## Altitude

0 ft

## Water Type

Salt Water

**Site:** Christmas Tree Cove

**Buddy:**

## Comments

21 Sep 08

Equipment build: 7mm suit + vest w/hood; one light; 13lbs weight; camera no strobe.

First time at Christmas Tree Cove. Water was green everywhere else, and this spot is supposed to have at least decent vis most of the time. So I suited up and headed down. Vis was decent at 8-10 feet. Entry/exit was a reasonably straightforward rocky affair. The hike up/down to the water was quite an effort, but it is a good dive site. However, I wouldn't say it warrants the hike on a regular basis. There is lots of structure and decent kelp patches. Most wildlife was out in the far end of the cove, but the swim isn't too far. This time I saw a lingcod, garibaldi, male and female sheephead, kelp bass, surf perch, senioritas, a small barracuda, many golf balls, but no nudibranchs (despite what the guidebook said). There were urchins everywhere so I had to be very cautious when using a bolder to steady me for pics and video--which was needed due to the mild surge. I made regular trips to the surface to check my bearings, as reflected in the profile. Overall, a good dive site I'll come back to every now and then.

## Additional Notes