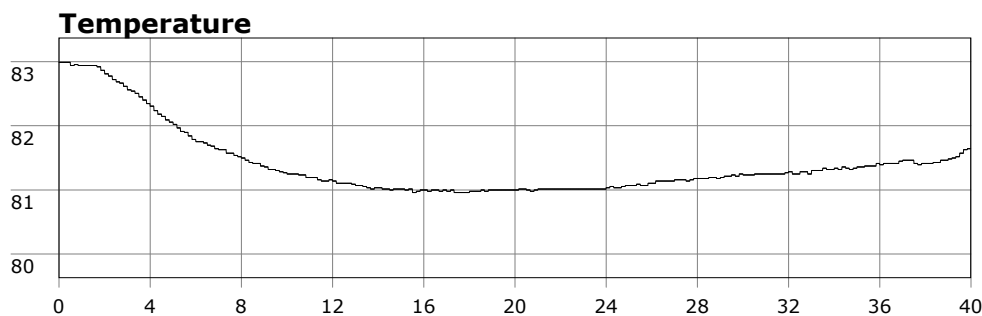


SU-05603 : 7/2/2009 7:54 AM



Interval

10 second(s)

Time

00:40:00 B.T.

00:40:00 B.T.

00:39:40 S.I.

Depth

Avg 35.45 ft 35.45 ft

Max 56.71 ft 56.71 ft

Temperature

Avg 81.40 °F 81.40 °F

Min 80.96 °F 80.96 °F

Ascent Rate

25.62 ft/min (max.)

25.62 ft/min (max.)

Tank Pressure

3000 PSI (in)

1900 PSI (out)

SAC Rate

13.3 PSI/min

Altitude

0 ft

Water Type

Salt Water

Site: Diego's reef, Sosua DR

Buddy: Dive master, and A Brit

Comments

2 Jul 09

Equipment config: 3mm shortie, 9lbs weight, camera no strobe, spare air.

Second dive at the DR. Same guide as before and this time got to dive with a real live Brit (accent so thick I could barely understand). This dive not quite as deep otherwise quite similar. Lot of reef structure and similar fish. Also a very large sea cucumber (biggest I've ever seen) and a very small bell jellyfish. Very leisurely dive.

Additional Notes