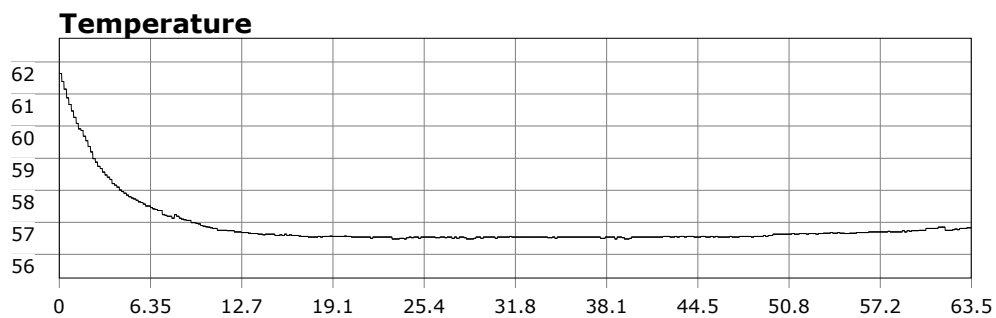


SU-05603 : 1/29/2012 9:08 AM



Interval	10 second(s)
Time	01:03:30 B.T. 01:03:30 B.T. 23:26:26 S.I.
Depth	Avg 24.33 ft 24.33 ft Max 50.79 ft 50.79 ft
Temperature	Avg 56.86 °F 56.86 °F Min 56.48 °F 56.48 °F
Ascent Rate	35.33 ft/min (max.) 35.33 ft/min (max.)
Tank Pressure	2950 PSI (in) 1250 PSI (out)
SAC Rate	15.5 PSI/min
Altitude	0 ft
Water Type	Salt Water

Site: Long Point

Buddy: PSD

Comments

Equipment build: new 7mm suit + 7 mm vest w/hood; three lights; 18 lbs weight, camera

Outsanding dive today. Vis easily 15-20ft and entry at the point was an easy do. Highlights include a horn shark, san diego dorids, large lemon dorids, and a bug.

Additional Notes
