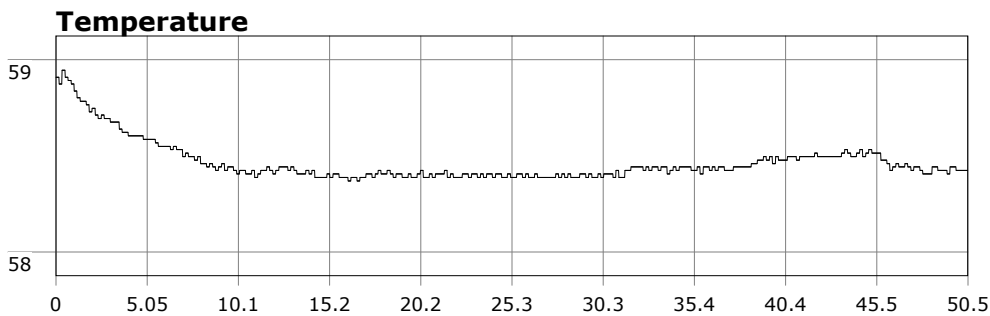


# SU-05603 : 11/11/2011 8:25 AM



|                      |  |
|----------------------|--|
| <b>Interval</b>      | 10 second(s)                                   |
| <b>Time</b>          | 00:50:30 B.T.<br>00:50:30 B.T.<br>>24 hrs S.I. |
| <b>Depth</b>         | Avg 27.33 ft 27.33 ft<br>Max 40.60 ft 40.60 ft |
| <b>Temperature</b>   | Avg 58.46 °F 58.46 °F<br>Min 58.37 °F 58.37 °F |
| <b>Ascent Rate</b>   | 47.17 ft/min (max.)<br>47.17 ft/min (max.)     |
| <b>Tank Pressure</b> | 3150 PSI (in)<br>1750 PSI (out)                |
| <b>SAC Rate</b>      | 15.2 PSI/min                                   |
| <b>Altitude</b>      | 0 ft   |
| <b>Water Type</b>    | Salt Water                                     |

**Site:** 120 deg reef

**Buddy:**

## Comments

Equipment build: new 7mm suit + 7 mm vest w/hood; one light; 18 lbs weight, camera

Surprisingly good dive at OML today with vis a solid 10ft and water temp 59 deg. The forecast this morning had improved to where the big waves weren't slated to roll in until the afternoon, so I rolled out a bit early to try and beat the swell.

The water at OML was fairly dam flat except for a little surface chop, so I suited up. I decided on 120 reef and a max bottom time of 45min to make sure I could duck in and out before the swell picked up. With the conditions I was very tempted to stay down much longer but decided to dive the plan and not risk it. I mostly hung out at the SE corner near the small arch.

The usual critters were out to include a large, male sheephead. But I was not expecting another Mako. I saw the Mako just a few minutes into the dive, and he split the scene in a blur. Size and behavior suggest it could be the same one I saw a few weeks ago near the Point. I've been watching Shark Week episodes the last few nights, so seeing one in person was that much more creepy.

## Additional Notes

---

---

---

---

---

---

---

---

---

---