

SU-05603 : 1/14/2012 9:41 AM



Interval

10 second(s)

Time

01:06:10 B.T.

01:06:10 B.T.

>24 hrs S.I.

Depth

Avg 28.38 ft 28.38 ft

Max 42.92 ft 42.92 ft

Temperature

Avg 57.42 °F 57.42 °F

Min 57.20 °F 57.20 °F

Ascent Rate

28.92 ft/min (max.)

28.92 ft/min (max.)

Tank Pressure

3000 PSI (in)

1000 PSI (out)

SAC Rate

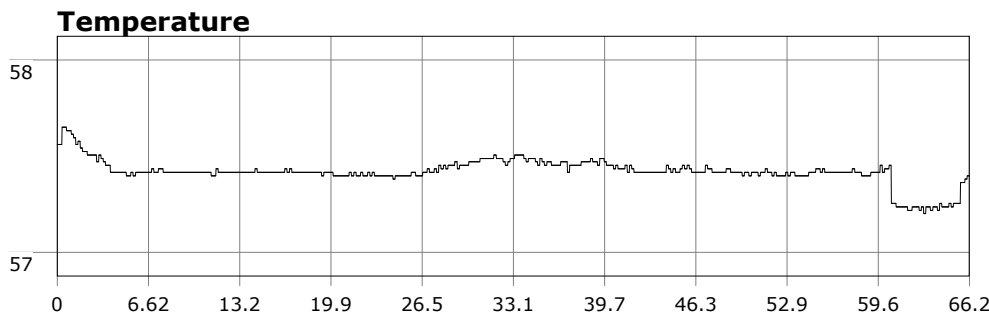
16.4 PSI/min

Altitude

0 ft

Water Type

Salt Water



Site: OML

Buddy: Dr. D.

Comments

Equipment build: new 7mm suit + 7 mm vest w/hood; three lights; 18 lbs weight, camera

Great dive today. Vis 5-6 ft at first but opened up as we headed towards the Point. Saw many short bugs to include a few fighting for turf. Guess they know the MLPA is in effect.

Additional Notes
