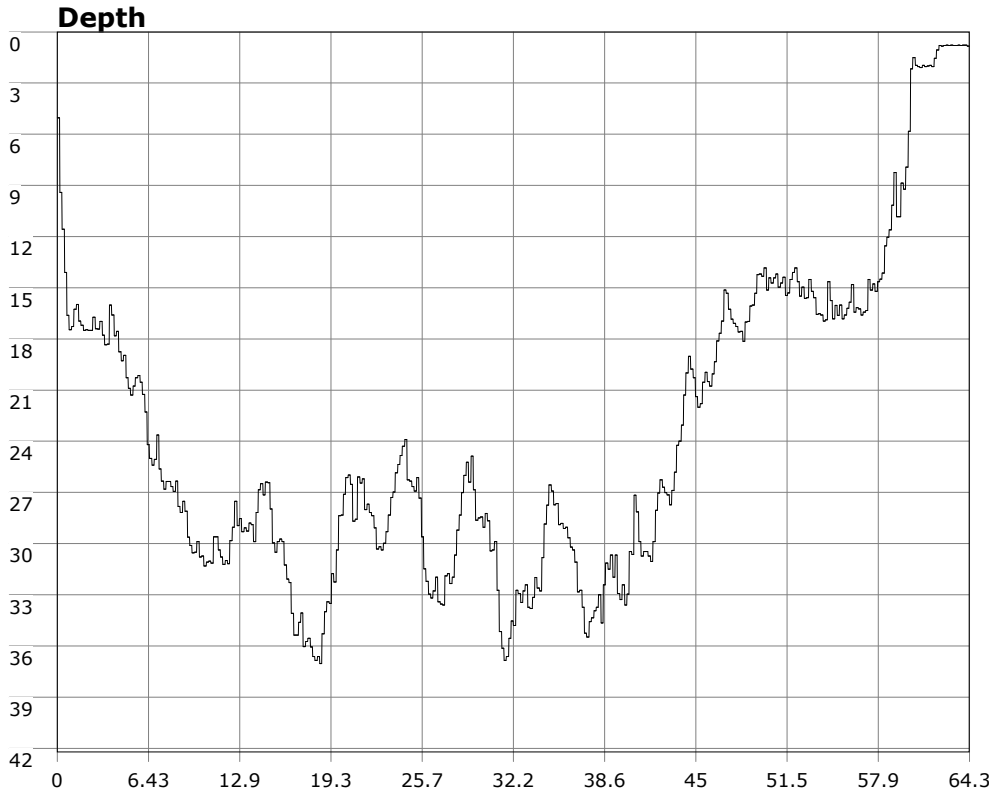


SU-05603 : 1/16/2012 8:59 AM



Interval

10 second(s)

Time

01:04:20 B.T.

01:04:20 B.T.

22:50:41 S.I.

Depth

Avg 23.36 ft 23.36 ft

Max 37.04 ft 37.04 ft

Temperature

Avg 57.91 °F 57.91 °F

Min 57.81 °F 57.81 °F

Ascent Rate

21.93 ft/min (max.)

21.93 ft/min (max.)

Tank Pressure

3100 PSI (in)

1250 PSI (out)

SAC Rate

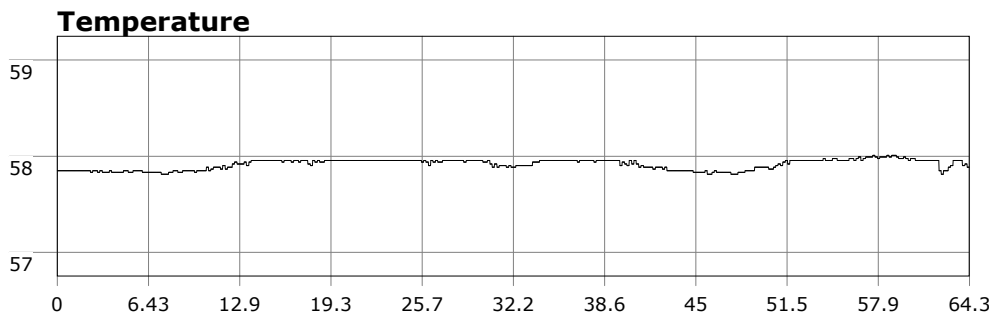
16.9 PSI/min

Altitude

0 ft

Water Type

Salt Water



Site: OML

Buddy:

Comments

Equipment build: new 7mm suit + 7 mm vest w/hood; three lights; 18 lbs weight, camera

Another good dive today. Surface conditions a bit more choppy due to the wind, and there was a bit more surge. But vis was still 8-10ft. Highlights include a big bat ray and female sheephead with a large scar who was way more skittish than sheephead usually are. Also found and fed Abby,.

Additional Notes
