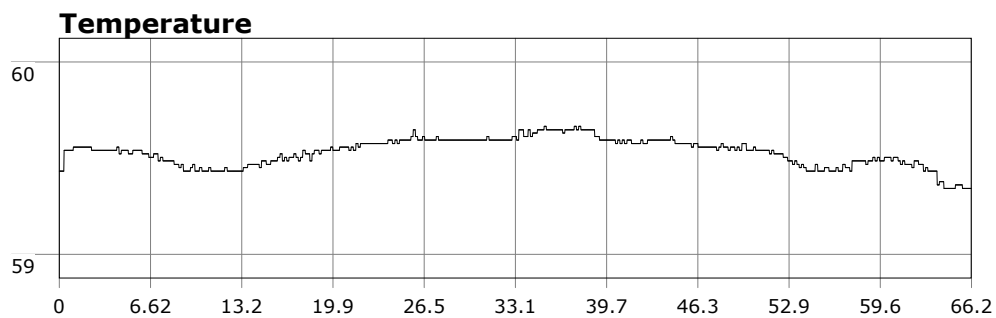


SU-05603 : 11/20/2011 9:14 AM



Interval	10 second(s)
Time	01:06:10 B.T. 01:06:10 B.T. 23:23:37 S.I.
Depth	Avg 24.71 ft 24.71 ft Max 42.05 ft 42.05 ft
Temperature	Avg 59.53 °F 59.53 °F Min 59.34 °F 59.34 °F
Ascent Rate	35.33 ft/min (max.) 35.33 ft/min (max.)
Tank Pressure	2900 PSI (in) 1200 PSI (out)
SAC Rate	14.9 PSI/min
Altitude	0 ft
Water Type	Salt Water

Site: OML

Buddy: Nice Bob

Comments

Equipment build: new 7mm suit + 7 mm vest w/hood; one light; 18 lbs weight, camera

Surprisingly good turnout today, despite the wx. The surface was a bumpy ride upon entry, to the point where you just wanted to drop to stop getting hammered. Surface conditions really got tough by the end of the dive. Nice Bob and I ran into a wall of poor vis and high frequency surge near the Garden on our return leg. These weren't present at the beginning of the dive. We surfaced in the cove to a roller coaster ride that was quite brutal. Anyone prone to motion sickness would have been blowing groceries before long. There was minimal break between waves so exiting was tough. Someone not already in the water would have waived off.

The dive itself was very good. 10ft vis, 60deg, plenty of short bugs. Bob did a great job navigating out and back and getting us out.

Additional Notes
